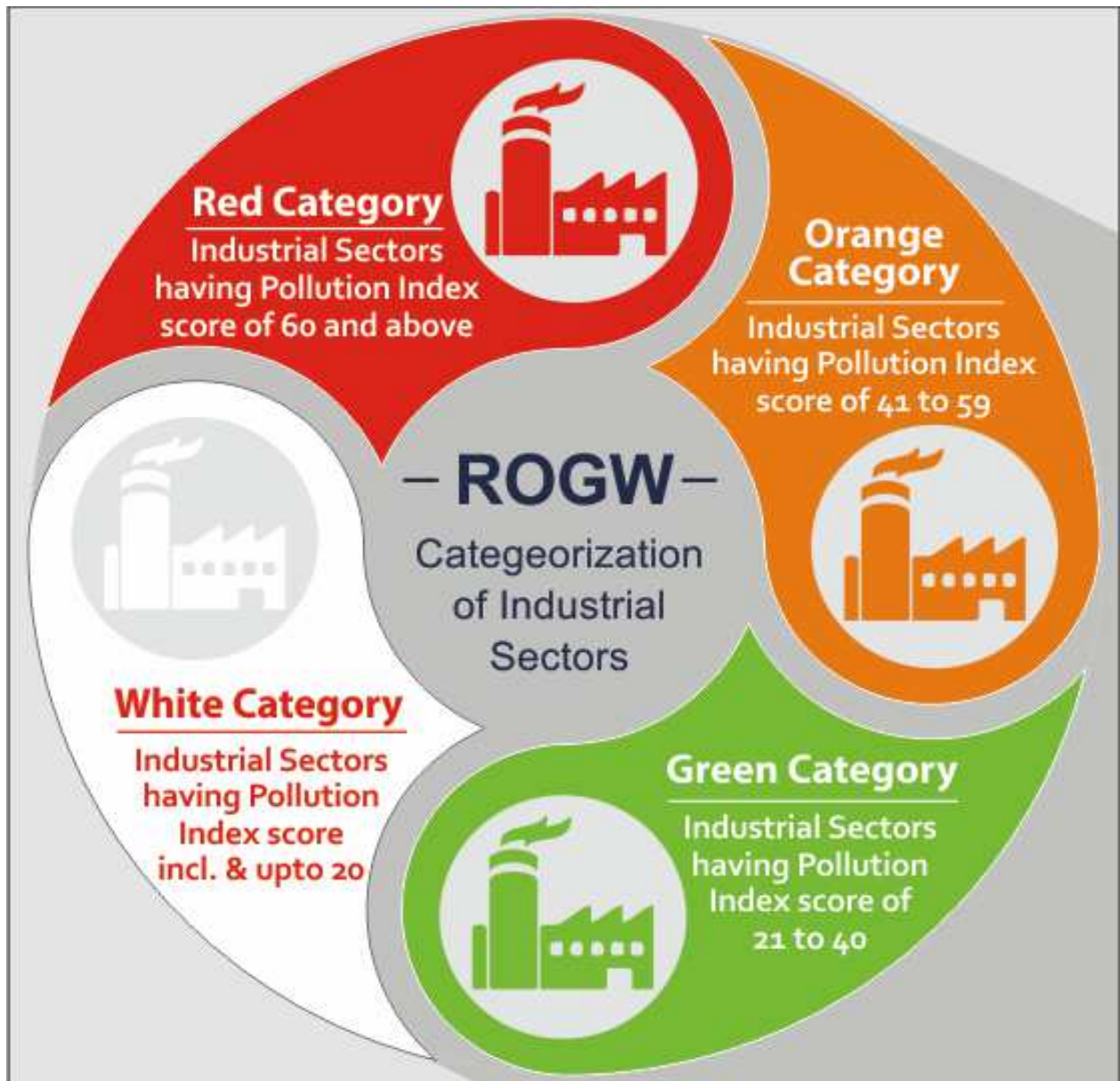


# Environmental Management Plan for Critically/Severely Polluted Area- (Dada Nagar, Panki, Fazalganj, Vijay Nagar & Jajmau of Kanpur Nagar)



Uttar Pradesh  
Pollution Control  
Board, Lucknow

## **E. COMPREHENSIVE ENVIRONMENTAL POLLUTION INDEX (CEPI)**

### **1. INTRODUCTION**

In 2009, the Ministry of Environment & Forests (MoEF), Govt. of India in association with Central Pollution Control Board (CPCB), New Delhi and Indian Institute of Technology (IIT), New Delhi have carried out an environmental assessment of industrial clusters across the country named "Comprehensive Environmental Pollution Index" (CEPI) with the aim of identifying polluted industrial clusters & prioritizing planning needs for intervention to improve the quality of environment in these industrial clusters and the nation as a whole.

The CEPI criteria was revised in 2016 and based on the CEPI-2016 criteria, CPCB carried out further monitoring in the year 2017-18, these clusters numbers went upto 100 in whole country, These clusters as may referred to order issued by Hon'ble National Green Tribunal for Original Application No. 1038/2018 dated 10.07.2019.

The industrial clusters/areas having aggregated CEPI scores of 70 and above were considered critically polluted clusters/areas and those with scores less than 70 and more than 60 were classified as Severely Polluted; further detailed investigations were carried out in terms of the extent of environmental damage and formulation of appropriate remedial action plan. There are total 13 Polluted industrial Areas (PIAs) which includes 9 critically polluted Areas (CPA) namely Mathura, **Kanpur**, Moradabad, Varanasi-Mirzapur, Bulandshahar-Khurja, Firozabad, Gajraula area, Agra, Ghaziabad and 4 severely Polluted Area viz. Noida, Meerut, Aligarh, Singrauli (UP & MP)

#### **NGT Direction:**

The Hon'ble NGT vide it's latest order dated 14.11.2019, has directed the Pollution Control Boards / Pollution Control Committees (PCBs/PCCs) to finalize time bound action plan to bring all the Polluted Industrial Areas (PIAs) within safe parameters as per the Air Act, the Water Act and the E.P. Act. The said order is available at **Annexure No.-IV**

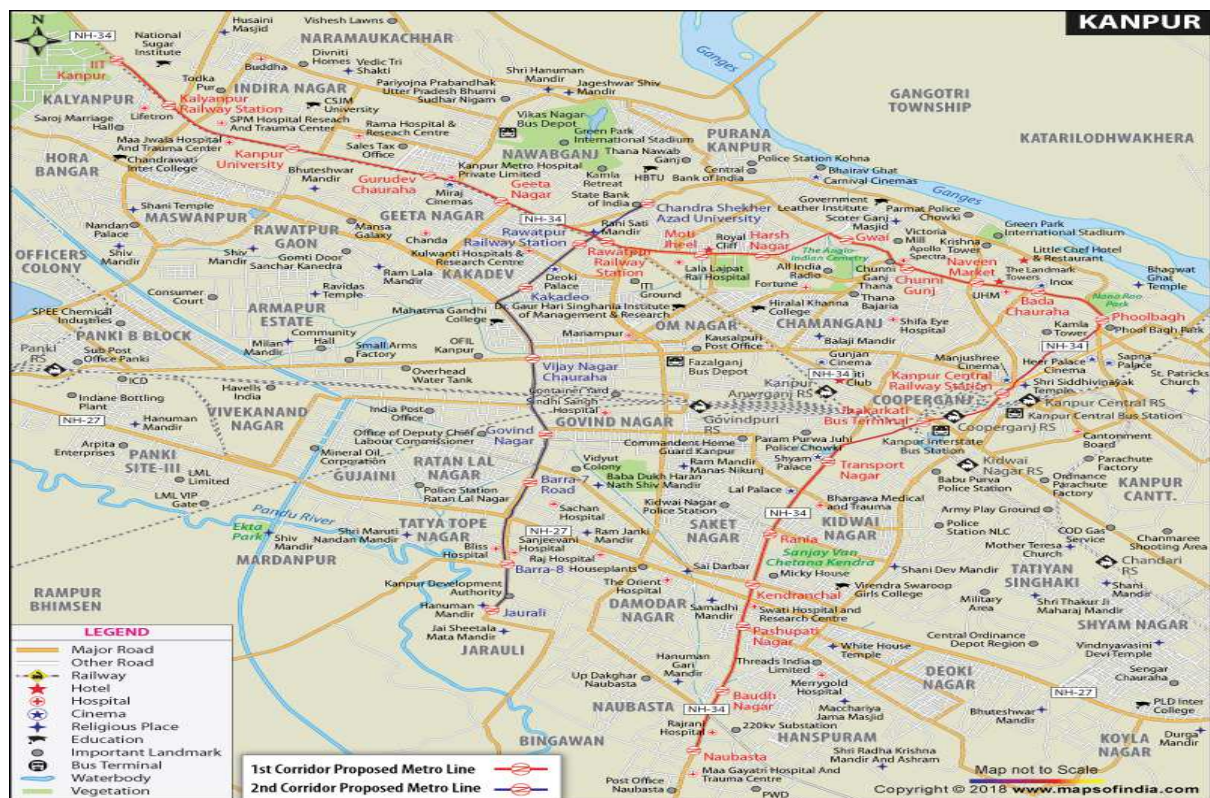
In compliance to Hon'ble NGT order Dated 23.08.2019, a mechanism has been issued by Ministry of Environment, Forest & Climate Change Govt. of India for environmental

management of Critically/ Severely polluted area enclosed with CPCB letter Dated 25.10.2019 available as **Annexure No.-V**

### 1.1 AREA DETAILS

As per the CEPI assessment, following areas have been identified as Critically/ Severely polluted area **Dada Nagar, Panki, Fazalganj, Vijay Nagar & Jajmau of Kanpur Nagar**

(Insert a location map showing Polluted Industrial Areas (PIAs) in the city- Sample map has been attached below and provide other details as well)



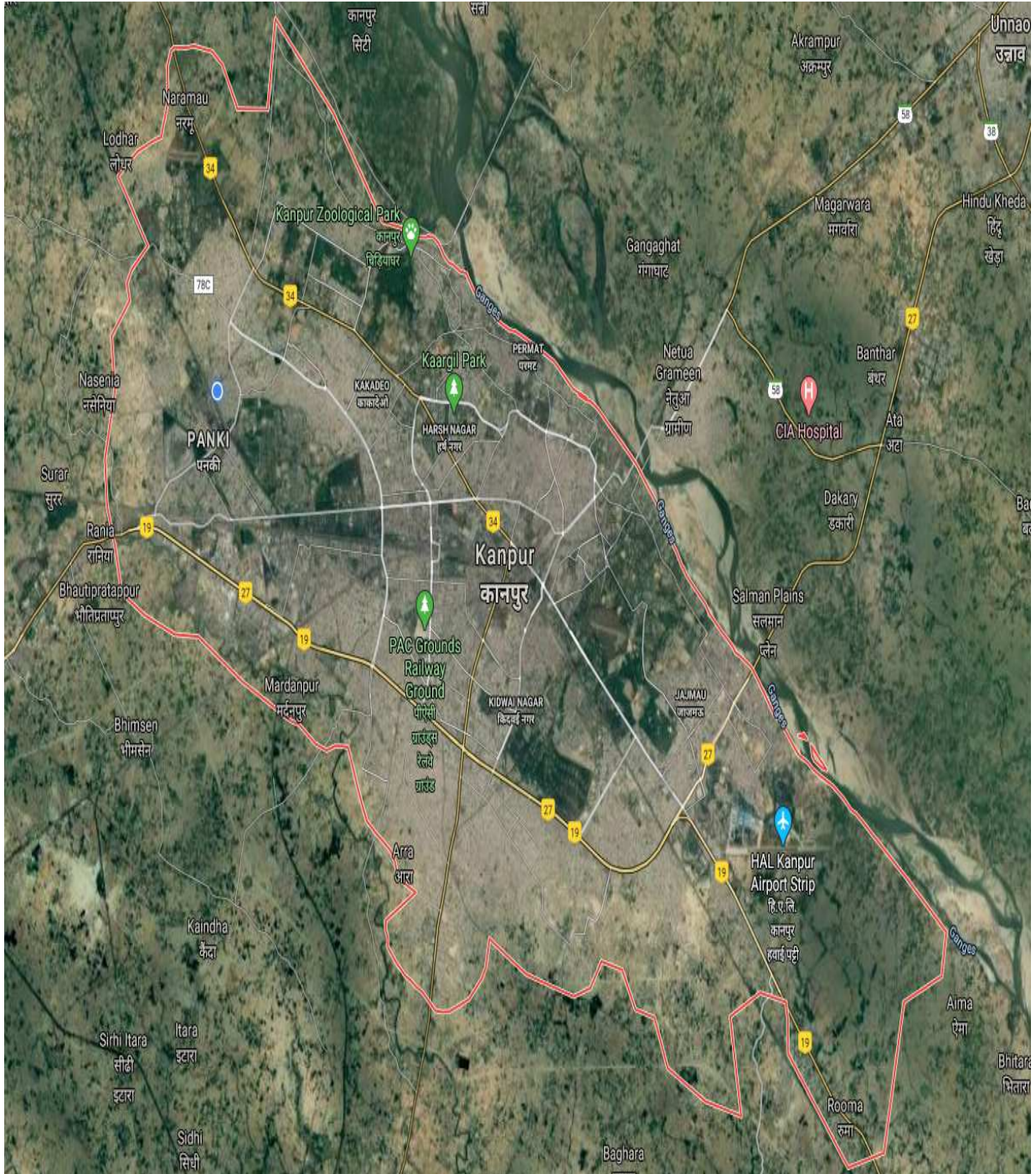
### 1.2 LOCATION

The coordinates of the cluster boundary are as follows:

Direction	Latitude	Longitude
East	26° 25' 52.4208" N	80° 24' 16.0992" E
West	26° 27' 9.8892" N	80° 10' 52.7268" E
North	26° 33' 37.0008" N	80° 16' 26.436" E
South	26° 22' 28.7256" N	80° 19' 2.1648" E

### 1.3 Digitized map showing geographical boundaries and Impact Zones

(Insert a location map showing geographical boundaries and Impact Zones in the city-  
Sample map has been attached below and provide other details as well)



**IMAGE: AERIAL VIEW - INDUSTRIAL C**

**1.4 CEPI Score :- (EPI:-Air-66.00, Water-85.00, Land-45.00), CEPI:- 89.46**

**1.5 Baseline Status Of Sensitive Receptors:** Total population and sensitive receptors (hospitals, educational institutions, courts etc) residing in the area comprising geographical area of the cluster and its impact zone.

S. No	Population		Number of Hospitals		Number of Educational Institutions		Number of Courts		Other socially sensitive features	
	Within Cluster	Impact Zone	Within Cluster	Impact Zone	Within Cluster	Impact Zone	Within Cluster	Impact Zone	Within Cluster	Impact Zone
1	1.68 Lacs	27.65 Lacs	45	669	31	203	0	4	0	2

**1.6 Eco-Geological Features:** Impact Zones [the area comprising of geographical area of the cluster and its impact zone (minimum 5 km)]

**1.6.1 Major water bodies (Rivers, Lakes, Ponds, etc.)**

S. No.	Rivers		Lakes		Ponds	
	Within Cluster	Impact Zone	Within Cluster	Impact Zone	Within Cluster	Impact Zone
1	02	02	0	0	03	03

**1.6.2 Ecological parks, sanctuaries, flora and fauna or any eco sensitive zones:**

Given below is the list of ecologically sensitive zones within the impact zone of the CEPI areas along with their distance and direction from the area:

S. No.	List of environmentally sensitive zones	Number	Distance and direction
1	1	1	3-4 Km from Vijay Nagar Cluster Within City

(Insert a Google Earth image showing above given zones)

**1.6.3 Buildings or Monuments of historical/archaeological/religious importance**

S. No.	List of Buildings or Monuments of historical/archaeological/religious importance's	Number	Distance and direction
1	<u>Temple/Museum/Park/Ghat/Zoo/Monument</u>	27	Within City

**1.7 Industry classification: Density of industry (no. of industries per 10 sq.km area or fraction)**

S.No.	Industrial Area	No. of Industry (R/O)	Area of Industrial Cluster	Density of Industry (No. of Ind./sq.km)
1	Dada Nagar	39	Approx 2.0 Sq. Km	19.5
2	Panki	123	Approx 5.0 Sq. Km	24.6
3	Fazalganj	3	Approx 0.5 Sq. Km	6.0
4	Vijay Nagar	-	-	-
5	Jajmau	388	Approx 4.0 Sq. Km	97

The total number of industries in the cluster is as listed below:

**1.7.1 Highly Polluting Industries (17 CATEGORIES)**

Scale Of Industries	Highly Polluting Industries		
	Air	Water	No. Of E-Waste/Hazardous Waste Generating Industries
Large	2	23	25
Medium	0	370	370
<b>Total</b>	<b>2</b>	<b>393</b>	<b>395</b>

**1.7.2 Red Category Industries (60 CATEGORIES)**

Scale Of Industries	Highly Polluting Industries		
	Air	Water	No. Of E-Waste/Hazardous Waste Generating Industries
Large	2	20	22
Medium	0	18	18
Small	9	552	561
<b>Total</b>	<b>11</b>	<b>590</b>	<b>601</b>

**1.7.3 Orange Category Industries**

Scale Of Industries	Number of Industries		
	Air	Water	No. Of E-Waste/Hazardous Waste Generating Industries
Large	0	0	0
Medium	5	3	3
Small	127	30	30
<b>Total</b>	<b>132</b>	<b>33</b>	<b>33</b>

#### 1.7.4 Green Category Industries

Scale Of Industries	Number of Industries		
	Air	Water	No. Of E-Waste/Hazardous Waste Generating Industries
Large	0	0	0
Medium	0	0	0
Small	403	0	0
<b>Total</b>	<b>403</b>	<b>0</b>	<b>0</b>

#### 1.7.5 GROSSLY POLLUTING INDUSTRIES

Scale Of Industries	Highly Polluting Industries		
	Air	Water	No. Of E-Waste/Hazardous Waste Generating Industries
Large	7	2	2
Medium	0	23	23
Small	0	404	404
<b>Total</b>	<b>7</b>	<b>429</b>	<b>429</b>

## 2.0 Water Environment

### 2.1 Present Status of Water Environment Supported with Minimum One-Year Analytical Data

Ganga River Upstream Kanpur

S. Parameters                      Observed values                      Standards  
No

1 D.O., B.O.D.

Month	Ganga at U/S Kanpur (Bithoor Ghat)		DO Minimum 5.0 mg/L	BOD Maximum 3.0 mg/L
	*D.O. (mg/l)	B.O.D. (mg/l)		
Dec-18	9.6	2.9		
Jan-19	10.6	2.9		
Feb-19	10.0	2.3		
Mar-19	9.2	3.2		
Apr-19	7.5	4.0		
May-19	7.4	4.4		

Jun-19	6.1	4.0
Jul-19	8.0	3.2
Aug-19	6.1	2.8
Sep-19	6.3	2.8
Oct-19	6.8	3.2
Nov-19	7.5	2.7
Dec-19	9.8	2.8
Jan-20	10.4	2.6

Ganga River Downstream Kanpur

**S. Parameters**                      **Observed values**                      **Standards**  
**No.**

**1 D.O., B.O.D.**

Month	Ganga at D/S Kanpur (Jana Village)	
	*D.O. (mg/l)	B.O.D. (mg/l)
Dec-18	9.0	4.2
Jan-19	9.1	3.3
Feb-19	9.2	3.2
Mar-19	9.4	3.4
Apr-19	7.7	5.6
May-19	6.5	5.5
Jun-19	5.3	5.4
Jul-19	4.6	5.8
Aug-19	5.3	3.8
Sep-19	5.8	3.4
Oct-19	6.1	5.0
Nov-19	7.0	4.0
Dec-19	9.0	4.4
Jan-20	9.1	4.2

DO Minimum 5.0 mg/L	BOD Maximum 3.0 mg/L
---------------------------	----------------------------

**2.2 Water Bodies/Effluent Receiving Drains in the Area Important For Water Quality Monitoring**

S. No.	Water Bodies	No. of drains discharging	Effluent discharge (MLD)
1	Ganga River	1 Paramiya Drain 2 Ranighat Drain 3 Seesamau Drain 4 Tefco Drain	Approx 23.75 MLD Temporary Tapped Tapped Tapped



	5	Permathghat Drain	Tapped
	6	Muirmill Drain	Tapped
	7	Police line drain	Tapped & Dry
	8	Jail Drain	Tapped & Dry
	9	Bhagwatdas Drain	Tapped
	10	Golaghat Drain	Temporary Tapped
	11	Satti Chaura Drain	Temporary Tapped
	12	Dabka Drain	Temporary Tapped but overflow (Approx 4.95 MLD)
	13	Sheetla bazaar Drain	Partially Tapped (Approx 8.65 MLD)
	14	Budhiyaghat Drain	Tapped
	15	Wazidpur Drain	Tapped
	16	Airforce Drain	Tapped
<b>2</b>		<b>Pandu River</b>	
	1	Ratanpur Nala	Untapped (approx 6.65 MLD)
	2	Panki Thermal Power Drain	Untapped(approx 34.7 MLD)
	3	ICI Drain	Untapped(approx 12.09 MLD)
	4	Ganda Nala	Partially Tapped(approx 46.88 MLD)
	5	Halwakhanda	Partially Tapped(approx 40.99 MLD)
	6	COD	Tapped

**2.1 Present Levels Of Pollutants In Water Bodies/Effluent Receiving Drains/Ground Water** (Routine parameters, special parameters and water toxics relevant to the area in three categories – known carcinogens, probable carcinogens and other toxics)

Ganga River

S. No.	Parameters	Observed values	Standards
<b>1</b>	<b><u>Upstream Kanpur</u></b> <b><u>(As on dated 18.02.2020)</u></b>		
	Colour	<b>20</b>	-
	pH	<b>8.58</b>	6.5 to 8.5
	D.O.	<b>1.1</b>	5.0 mg/L or more
	B.O.D	<b>3.6</b>	3.0 mg/L or more
	Total Coliform	<b>4700</b>	-
<b>2</b>	<b><u>Downstream Kanpur</u></b> <b><u>(As on dated 18.02.2020)</u></b>		
	Colour	<b>20</b>	-
	pH	<b>8.34</b>	6.5 to 8.5
	D.O.	<b>10</b>	5.0 mg/L or more
	B.O.D	<b>4.6</b>	3.0 mg/L or more
	Total Coliform	<b>38000</b>	-

Pandu River

S. No.	Parameters	Observed values	Standards
<b>1</b>	<b><u>Hameerpur Bridge</u></b> <b><u>(As on dated 18.02.2020)</u></b>		
	Colour	<b>30</b>	-
	pH	<b>7.94</b>	6.5 to 8.5
	D.O.	<b>1.9</b>	5.0 mg/L or more
	B.O.D	<b>8.2</b>	3.0 mg/L or more
	Total Coliform	<b>94000</b>	-

#### 2.4 Predominant Sources Contributing To Various Pollutants

S. No.	Sources	Effluent discharge	Major Pollutants
<b>1</b>	<b><u>Domestic</u></b>		
	Permiya Nala (Ganga River)	Approx 23.75 MLD	
	Dabka Nala (Ganga River)	Approx 4.95 MLD	
	Halwakhanda Nala (Pandu River)	Approx 40.99 MLD	BOD, COD, TSS
<b>2</b>	<b><u>Industrial (Mixed)</u></b>		
	Sheetla Bazar (Ganga River)	Approx 8.65 MLD	
	Bhudhiyaghat (Ganga River)	Approx 1.55 MLD	Colour, pH, DO, BOD, COD, TSS,
	Panki Thermal Power(Pandu River)	Approx 34.7 MLD	TDS,Heavy metal
	Ratanpur Nala (Pandu River)	Approx 6.65 MLD	
	ICI Drain (Pandu River)	Approx 12.09 MLD	
	Ganda Nala (Pandu River)	Approx 46.88 MLD	

## 2.5 Sources of Water Pollution

### 2.5.1 Industrial Pollution Sources

The drain wise and sector wise distribution of industries and their estimated treated effluent discharge and details of CETP is given in the tables below:

#### Summary of Industrial Units

S.No.	Drain	Type of Industry							Total Effluent Discharge (MLD)
		* The Type of Industry may be changed as per local conditions							
		Sugar	Pulp & Paper	Distillery	Textile	Slaughter House	Others	Total	
1	Wazidpur	0	0	0	0	0	134	134	2.295 (in case of overflow from pumping station)
	Budhiyaghat	0	0	0	0	0	25	25	0.378 (in case of overflow from pumping station)
	Sheetla bazar	0	0	0	0	0	179	179	2.4304 (in case of overflow from pumping station)
	ICI Drain	0	0	0	30	0	10	40	8.416
	Ganda nala	0	1	0	22	0	13	36	0.719
	Halwakhanda nala	0	0	0	0	0	0	0	0
	Panki Thermal power	0	0	0	0	0	01 (Closed)	01	0
	COD	0	0	0	0	1 (Closed)	0	01	0
	Direct to Pandu River	0	1	0	0	0	0	01	ZLD
<b>Total</b>		<b>0</b>	<b>2</b>	<b>0</b>	<b>52</b>	<b>01</b>	<b>362</b>	<b>417</b>	<b>14.2384</b>

## 2.5.2 Domestic Pollution Sources

### a) Details of Drains

### Summary of Drains

S No.	District	No. of Drains	Type of Drains			Status of Drains			Sewage Discharge (MLD)			Total Discharge in the River (MLD)
			Domestic	Industrial	Mixed	Tapped	Untapped	Partially Tapped	Treated	Untreated	Total	
<b>Drains Meeting at, Pandu River, Kanpur</b>												
1	ICI Drain	1	-	-	Yes	NO	Yes	-	-	5.8	-	5.8
2	Ganda nala	1	-	-	Yes	NO	-	Yes	-	46.88	-	46.88
3	Halwakhand nala	1	Yes	-	-	NO	-	Yes	-	40.99	-	40.99
4	Panki Thermal power	1	-	-	Yes	NO	Yes	-	-	34.7	-	34.7
5	Ratanpur	1	Yes	-	-	NO	Yes	-	-	6.65	-	6.65
6	COD	1	-	-	Yes	Yes	-	-	-	-	-	-
<b>Drains Meeting at River Ganga in Kanpur</b>												
7	Air force	1	Yes	-	-	Yes	-	-	7.87	-	-	7.87
8	Wazidpur	1	-	-	Yes	Yes	NO	-	-	-	-	-
9	Budhiyaghat	1	-	-	Yes	Yes	NO	-	-	-	-	-
10	Sheetla bazar	1	-	-	Yes	Yes	NO	-	-	11.25	-	11.25
11	Dabka nala	1	Yes	-	-	NO	Yes	-	-	17.21	-	17.21
12	Satti chaura	1	Yes	-	-	Temporary Tapped	NO	-	-	-	-	-
13	Golaghat nala	1	Yes	-	-	Temporary Tapped	NO	-	-	-	-	-
14	Guptar ghat nala	1	Yes	-	-	Yes	NO	-	-	-	-	-
15	Muir mill drain	1	Yes	-	-	Yes	NO	-	-	-	-	-
16	Parmatghat nala	1	Yes	-	-	Yes	NO	-	-	-	-	-

17	Tefco nala	1	Yes	-	-	Yes	NO	-	-	-	-	-
18	Sisamau nala	1	-	-	Yes	Yes	NO	-	-	-	-	-
19	Ranighat nala	1	Yes	-	-	Temporary Tapped	-	-	-	-	-	-
20	Parmiya nala	1	Yes	-	-	1. Parmiyapurwa Nala- Tapped 2. Nawabganj Nala- Temporary Tapped 3. HBTI Nala- Untapped	-	-	-	12.16	-	12.16
21	Police line drain	1	Yes	-	-	Yes	-	-	Dry	Dry	-	-
22	Jail drain	1	Yes	-	-	Yes	-	-	Dry	Dry	-	-
	<b>Total</b>	<b>22</b>	<b>13</b>	<b>-</b>	<b>8</b>	<b>12</b>	<b>4</b>	<b>2</b>	<b>7.87</b>	<b>183.51</b>	<b>-</b>	<b>183.51</b>

S No.	District	No. of Drains	Name of Drain	Type of Drains	Status of Drains			Sewage Discharge (MLD)			Total Discharge in the River (MLD)	
					Domestic	Tapped	Untapped	Partially Tapped	Treated	Untreated		Total

**b) Details of Sewage Pollution Sources**

The details of Sewage Treatment Plants along with installed capacity, utilized capacity, operating agency and discharge point is given in the table below:-

**Details of STPs**

S.No.	Name of STP	Location		Installed Capacity (MLD)	Utilized Capacity (MLD)	Capacity Utilized (%)	Operating Govt. Agency	Discharge Drain
		Latitude	Longitude					
1	Jajmau, Kanpur	26.416286	80.421527	130	114	87.6%	U.P. Jal Nigam (GPCU)	Irrigation Channel
2	Jajmau, Kanpur	26.416811	80.421795	5	4.8	96%	U.P. Jal Nigam (GPCU)	Irrigation Channel
3	Bingawan, Kanpur	26.3677841	80.3171547	210	135	64%	U.P. Jal Nigam (GPCU)	River Pandu
4	Sajari, Kanpur	26.374222	80.400482	42	15	30.57%	U.P. Jal Nigam (GPCU)	River Pandu
5	Jajmau, Kanpur	26.416336	80.421286	43	26	60.4% Under commission	U.P. Jal Nigam (GPCU)	River Pandu
6	Baniyapur Kanpur	26.5293647	80.2762102	15	Under Construction	-	U.P. Jal Nigam (GPCU)	River Ganga

**Details of Proposed STP**

S.No.	Name of STP	Location		Installed Capacity (MLD)	Utilized Capacity (MLD)	Capacity Utilized (%)	Operating Govt. Agency	Discharge Drain
		Latitude	Longitude					
1	Panka Kanpur	Proposed	Proposed	40	Proposed	-	U.P. Jal Nigam (GPCU)	River Pandu

### DETAILS OF CETPs

S.No.	District	Name of CETP	Location		Installed Capacity (MLD)	Utilized Capacity (MLD)	Operating Govt. Agency/SPV	Discharge Drain
			Latitude	Longitude				
1	Kanpur	36 MLD, Jajmau, Kanpur	26.416286	80.421795	36	36	U.P. Jal Nigam (GPCU)	Irrigation Channel
2	Kanpur	1.5 MLD, CETP, Rooma	26.366941	80.425536	1.5	0.75	SPV	Irrigation Channel

2.5.3 **Others Sources** (Agricultural Runoff, Leachate from MSW Dump, Illegal Dump Sites etc.): Please provide details  
**1- MSW Disposal Facility of Capacity 1447 TPD**  
**2- Old Illegal Dump sites:- Nauraiya Khera, Panki & Rakhi Mandi.**

2.6 **Impact on Surrounding Area (Outside the PIAs):** Data of Surrounding Area not available. Ground Water Monitoring in the area Panki Industrial Area (Nauriya Khera) & Jajmau (Wazidpur) is carried out under MINARS Scheme. Latest data is attached.

# MONITORING OF INDIAN NATIONAL AQUATIC RESOURCES

MINARS/GEMS

MINDAT/GLOWDAT

1. STATION CODE - 

1	7	4	4
---	---	---	---

2. DATE & TIME OF SAMPLE TAKEN (DDMMYY) 

1	3	1	0	1	9
---	---	---	---	---	---

1	4	3	0
---	---	---	---

3. WEATHER 

Clear			
-------	--	--	--

4. APPROX. DEPTH OF MAIN STREAM 

--	--	--	--	--

5. COLOUR & INTENSITY 

	Colourless				
--	------------	--	--	--	--

6. ODOUR 

	Odourless	
--	-----------	--

7. VISIBLE EFFLUENT DISCHARGE IN PROXIMITY 

	Odourless	
--	-----------	--

8. HUMAN ACTIVITIES AROUND STATION 

--	--	--	--

9. LOCATION DETAIL

U/S of Town or Industrial Area	D/S of Town or Industrial Area	Pilgrim Centre Bathing Ghat	Abstraction for Water Supply

STATION Hand pump at Wajidpur, Jajmau Kanpur.

TYPE Grab

COMPLETED BY Smt. Chitra Srivastava, ASO

AGENCY U.P. Pollution Control Board, Kanpur

DETERMINAND	WHO CODE	AQC FLAG	VALUE
TEMPREATURE °C	0 2 0 0 1 N		3 1 . 0 0
pH	1 0 3 0 2 N		7 . 7 7
CONDUCTIVITY µmhos/cm	0 2 0 4 1 N		2 0 2 8 . 0 0
ALKALINITY mg/l			
(i) ELECTROMETRIC	1 0 1 0 1 N		
(ii) VISUAL TITRATION	1 0 1 0 2 N		2 6 4 . 0 0
NITROGEN (NO <sub>3</sub> +NO <sub>2</sub> )mg/l	0 7 1 0 5 N		
DISSOLVED OXYGEN mg/l	0 8 1 0 1 N		
B.O.D. mg/l	0 8 2 0 1 N		N D
C.O.D. mg/l	0 8 3 0 1 N		5 . 4 0
CHLORIDE mg/l			
(i) ARGENTOMETRIC	1 7 2 0 1 N		1 7 2 . 0 0
(ii) MERCURIMETRIC	1 7 2 0 1 N		
SULPHATE mg/l			
(i) GRAVIMETRIC	1 8 3 0 1 N		
(ii) TURBIDIMETRIC	1 8 3 0 2 N		
SODIUM mg/l	1 1 1 0 3 N		
CALCIUM as CaCO <sub>3</sub> Mg/l	2 0 1 0 1 N		1 0 2 . 0 0
MAGNESIUM as Ca CO <sub>3</sub> mg/l	1 2 1 0 3 N		8 6 . 0 0
FECAL COLIFORM, MPN/100ml.	3 8 0 1 1 N		< 1 . 8 0
INSTANTANEOUS Discharge m <sup>3</sup> /Sec.	9 7 1 8 7 N		
P.ALKALINITY mg/l			N I L

DETERMINAND	ARBITRARY CODE	AQC FLAG	VALUE
TURBIDITY JTU/NTU	0 2 1 0 1 N		
VELOCITY OF FLOW m/sec			
(i) CURRENT METER	0 2 2 0 1 N		
(ii) FLOAT	0 2 2 0 2 N		
(iii) CHEMICAL	0 2 2 0 3 N		
TOTAL KJELDAHL NITROGEN, mg/l			
(i) TITRATION	0 7 0 0 1 N		
(ii) NESSELERIZATION	0 7 0 0 4 N		
HARDNESS as CaCO <sub>3</sub> mg/l	2 2 1 0 1 N		1 8 8 . 0 0
TOTAL COLIFORM MPN/100ml.	3 7 0 0 1 N		< 1 . 8 0
TOTAL DISSOLVED SOLIDS mg/l	3 3 3 3 3 N		1 3 9 4 . 0 0
FIXED DISSOLVED SOLIDS mg/l	4 4 4 4 4 N		
AMMONIA NITROGEN mg/l			
(i) COLOURIMETRY	0 7 5 5 5 N		
(ii) DISTILLATION TITRATION	0 7 5 5 1 N		
BORON mg/l	0 5 1 0 5 N		
PHOSPHATE mg/l			
NITRATE - N mg/l			
TOTAL SUSPENDED SOLIDS			
FLUORIDE			



# MONITORING OF INDIAN NATIONAL AQUATIC RESOURCES

**MINARS/GEMS**

**MINDAT/GLOWDAT**

1. STATION CODE -

1	7	4	5
1	3	1	0
1	9		

1	5	0	0
---	---	---	---

2. DATE & TIME OF SAMPLE TAKEN (DDMMYY)

3. WEATHER Clear

4. APPROX. DEPTH OF MAIN STREAM

5. COLOUR & INTENSITY Colourless

6. ODOUR Odourless

7. VISIBLE EFFLUENT DISCHARGE IN PROXIMITY Odourless

8. HUMAN ACTIVITIES AROUND STATION

9. LOCATION DETAIL

U/S of Town or Industrial Area	D/S of Town or Industrial Area	Pilgrim Centre Bathing Ghat	Abstraction for Water Supply

STATION

Hand Pump Nauraiya Kheda,  
Panki, Kanpur

TYPE

Grab

COMPLETED BY

Smt. Chitra Srivastava, ASO

AGENCY

U.P. Pollution Control Board, Kanpur

DETERMINAND                      WHO CODE    AQC FLAG                      VALUE

TEMPREATURE °C	0	2	0	0	1	N				3	1	.	0	0			
pH	1	0	3	0	2	N							7	.5	8		
CONDUCTIVITY µmhos/cm	0	2	0	4	1	N				5	3	.	0	0			
ALKALINITY mg/l																	
(i) ELECTROMETRIC	1	0	1	0	1	N											
(ii) VISUAL TITRATION	1	0	1	0	2	N				3	2	.	4	.	0	0	
NITROGEN (NO <sub>3</sub> +NO <sub>2</sub> )mg/l	0	7	1	0	5	N											
DISSOLVED OXYGEN mg/l	0	8	1	0	1	N											
B.O.D. mg/l	0	8	2	0	1	N									N	D	
C.O.D. mg/l	0	8	3	0	1	N							7	.	2	0	
CHLORIDE mg/l																	
(i) ARGENTOMETRIC	1	7	2	0	1	N				1	8	.	2	.	0		
(ii) MERCURIMETRIC	1	7	2	0	1	N											
SULPHATE mg/l																	
(i) GRAVIMETRIC	1	6	3	0	1	N											
(ii) TURBIDIMETRIC	1	6	3	0	2	N											
SODIUM mg/l	1	1	1	0	3	N											
CALCIUM as CaCO <sub>3</sub> Mg/l	2	0	1	0	1	N				1	6	.	8	.	0	0	
MAGNESIUM as Ca CO <sub>3</sub> mg/l	1	2	1	0	3	N				1	1	.	2	.	0	0	
FECAL COLIFORM. MPN/100ml.	3	6	0	1	1	N				<	1	.	8	.	0	0	
INSTANTANEOUS Discharge m <sup>3</sup> /Sec.	9	7	1	6	7	N											
P.ALKALINITY mg/l															N	I	L

ARBITRARY

DETERMINAND                      CODE                      AQC FLAG                      VALUE

TURBIDITY JTU/NTU	0	2	1	0	1	N														
VELOCITY OF FLOW m/sec																				
(i) CURRENT METER	0	2	2	0	1	N														
(ii) FLOAT	0	2	2	0	2	N														
(iii) CHEMICAL	0	2	2	0	3	N														
TOTAL KJELDAHL NITROGEN, mg/l																				
(i) TITRATION	0	7	0	0	1	N														
(ii) NESSELERIZATION	0	7	0	0	4	N														
HARDNESS as CaCO <sub>3</sub> mg/l	2	2	1	0	1	N							2	8	.	0	0			
TOTAL COLIFORM MPN/100ml.	3	7	0	0	1	N							<	1	.	8	0			
TOTAL DISSOLVED SOLIDS mg/l	3	3	3	3	3	N							3	3	.	7	.	0	0	
FIXED DISSOLVED SOLIDS mg/l	4	4	4	4	4	N														
AMMONIA NITROGEN mg/l																				
(i) COLOURIMETRY	0	7	5	5	5	N														
(ii) DISTILLATION TITRATION	0	7	5	5	1	N														
BORON mg/l	0	5	1	0	5	N														
PHOSPHATE mg/l																				
NITRATE - N mg/l																				
TOTAL SUSPENDED SOLIDS																				
FLUORIDE																				

## 2.7 Details of Water Polluting Industries in the Area/ Cluster

S. No	Name & Address of Industry	Product	Location		Type	Treatment Mechanism (ETP/	Effluent Discharge (KLD)	Effluent Discharge Drain	Consent Status	
			CETP)	Air		Water				
1	A.K. Bleaching and Dyeing, G 50, Stie-3, Panki, Kanpur	Dyed Grey Cloth	26°46'306"	80°30'215"	Dyeing & Bleaching	Yes	7.5	ICI drain/Pandu/Ganga	Valid	Valid
2	Akzo nobel India Ltd. (ICI), ( New Name - Jhonson Methyu Chemicals India Ltd)Panki Plot - 2A, site-2B udyognaganj, Industrial Area, Kanpur.	Catalyst	26°46'306"	80°30'215"	Chemical (Catalyst)	Yes	405	ICI drain/Pandu/Ganga	Under Considration	Under Considration
3	Amber Textiles, D 16, Site 2, Panki, Kanpur	Dyed Grey Cloth	26°46'306"	80°30'215"	Dying & Bleaching	Yes	6	ICI drain/Pandu/Ganga	Under Considration	Under Considration
4	Anod Plasma Sprey Ltd., 103, 104 Uptron Estate, Site 1, Panki, Kanpur	Printing Roller	26°46'306"	80°30'215"	Metal Surface Treatment	Yes	15	ICI drain/Pandu/Ganga	Valid	Valid
5	Basotia Ind., C-16,17, Site-4, Panki, Kanpur	Dyed Grey Cloth	26°46'306"	80°30'215"	Dyeing	Yes	7	ICI drain/Pandu/Ganga	Valid	Valid
6	Deep Knitwear, C-19, Panki Site-4, Kanpur	Dyed Grey Cloth	26°46'306"	80°30'215"	Yarn/Textile Processing	Yes	4	ICI drain/Pandu/Ganga	Valid	Valid
7	Devine Synthetic, B-9, 10, Panki Site-4, Kanpur	Dyed Thread	26°46'306"	80°30'215"	Yarn/Textile Processing	Yes	1	ICI drain/Pandu/Ganga	Valid	Valid
8	Dinesh Oils Ltd. D-12,13,14, Industrial Area, Panki-3, Kanpur Nagar	Vegetable oil	26°44'16"	80°24'88"	Food Products (Refind Oil)	Yes	115	ICI drain/Pandu/Ganga	Closed	Closed
9	Double Aar Industries, D-4, Site-4 Panki Industrial Area, Kanpur	Dyed Grey Cloth	26°46'306"	80°30'215"	Bleaching	Yes	4	ICI drain/Pandu/Ganga	Valid	Valid
10	Gayatri Textiles, S 37, Site 4, Panki, Kanpur	Dyed Grey Cloth	26°46'306"	80°30'215"	Bleaching	Yes	0	ICI drain/Pandu/Ganga	Closed	Closed

11	Hindustan Aqua Ltd, E 7, Site 1, Panki , Kanpur	Beverages /Bottling	26°46'306"	80°30'215"	Food Products (Soft drinks )	Yes	300	ICI drain/Pandu/Ganga	Valid	Valid
12	J.P. Knit Wears, S-9 Site-4, Panki, Kanpur	Dyed Grey Cloth	26°46'306"	80°30'215"	Yarn/Textile Processing	Yes	4.5	ICI drain/Pandu/Ganga	Valid	Valid
13	Kanpur fertilzer & Cement Ltd.(Duncan fertilzer) CEE KEY Estate Udyog Vihar Panki Ind. Area, Kanpur	Urea Fertilizer	26°27'25"	80°15'00"	Fertilzer	Yes	7200	ICI drain/Pandu/Ganga	Under Considration	Under Considration
14	Lavangana Textile, D-3, UPSIDC, Panki Site-4, Kanpur	Dyed Grey Cloth	26°46'306"	80°30'215"	Yarn/Textile Processing	No	0	ICI drain/Pandu/Ganga	Closed	Closed
15	LML Limited, (East Block). A-2, A-3, C 10 Pnki Site-2, 3, Kanpur	Closed	26°26'17"	80°15'14.4"	Automobile	Yes	6	ICI drain/Pandu/Ganga	Closed	Closed
16	LML Limited, (West Block).A-2, A-3, C 10 Pnki Site-2, 3, Kanpur	Closed	26°26'17"	80°15'14.4"	Automobile	Yes	8	ICI drain/Pandu/Ganga	Closed	Closed
17	Lohia Corp. Ltd. (Old Name: Lohiya Starlinger Ltd.), D 3/A, Panki Site-1, Kanpur,	Machine Parts	26°46'306"	80°30'215"	Machines Parts	Yes	65	ICI drain/Pandu/Ganga	Valid	Valid
18	M.K. Dyeing,G 82, Site-3, Kanpur	Dyed Grey Cloth	26°46'306"	80°30'215"	Dyeing & Bleaching	Yes	9	ICI drain/Pandu/Ganga	Valid	Valid
19	Maharaja Bleaching Works, D-76, Site-4, Panki, Kanpur	Bleaching & Dyeing	26°46'306"	80°30'215"	Bleaching	Yes	3	ICI drain/Pandu/Ganga	Valid	Valid
20	Mahaveer Textile, 444 A, Site-1, Panki, Kanpur	Dyed Grey Cloth	26°46'306"	80°30'215"	Dyeing	Yes	7	ICI drain/Pandu/Ganga	Not having vaild consent	Not having vaild consent
21	MLA Industries, (Old Name Synthetis Silica Prod) D-7,8 , Site-1, Panki, Kanpur	Silica & Minerals	26°46'306"	80°30'215"	Chemical	Yes	100	ICI drain/Pandu/Ganga	Valid	Valid
22	Mukund Industry, J-16, site-3, Panki Kanpur	Dyed Grey Cloth	26°46'306"	80°30'215"	Yarn/Textile Processing	Yes	4	ICI drain/Pandu/Ganga	Valid	Valid

23	Prakash Textile, Panki Site-2, Kanpur	Dyed Grey Cloth	26°46'306"	80°30'215"	Dyeing & Bleaching	Yes	3	ICI drain/Pandu/Ganga	Valid	Valid
24	Praveen Textiles, E-4, Site-2, Panki Industrial Area, Kanpur	Dyed Grey Cloth	26°46'306"	80°30'215"	Yarn/Textile Processing	Yes	6	ICI drain/Pandu/Ganga	Valid	Valid
25	Shri Radha Enterprises, H 42, 43, Stie-1 Panki, Kanpur	Dyed Grey Cloth	26°46'306"	80°30'215"	Dyeing & Bleaching	Yes	3	ICI drain/Pandu/Ganga	Valid	Valid
26	Saraswati Engineering , Panki Industrial Area Site-1, Kanpur	Metal Surface Treatment	26°46'306"	80°30'215"	Metal Surface Treatment	Yes	2	ICI drain/Pandu/Ganga	Closed	Closed
27	Sarvodaya Bleaching Works, G-96, Site-3, Panki, Kanpur	Dyed Grey Cloth	26°46'306"	80°30'215"	Bleaching	Yes	4.5	ICI drain/Pandu/Ganga	Valid	Valid
28	Shiva Industries, C26, Site -1, Panki , Kanpur	Dyed Grey Cloth	26°46'306"	80°30'215"	Dyeing	Yes	22.5	ICI drain/Pandu/Ganga	Valid	Valid
29	Shiva Knit Wear, B 15,16, Site 4, Panki, Kanpur	Dyed Grey Cloth	26°46'306"	80°30'215"	Yarn/Textile Processing	Yes	15	ICI drain/Pandu/Ganga	Valid	Valid
30	Shivam Textiles, J 49, Site 3, Panki, Kanpur	Dyed Grey Cloth	26°46'306"	80°30'215"	Yarn/Textile Processing	Yes	15	ICI drain/Pandu/Ganga	Valid	Valid
31	Sudarshan Dyeing , G-102, Panki Site-3, Kanpur	Dyed Grey Cloth	26°46'306"	80°30'215"	Dyeing & Textile	Yes	9	ICI drain/Pandu/Ganga	Valid	Valid
32	V.N.Sons(AVR Enterprises)23/24 D Panki site 1 kanpur	Dyed Grey Cloth	26°46'306"	80°30'215"	Dyeing & Bleaching	Yes	22.5	ICI drain/Pandu/Ganga	Under Considration	Under Considration
33	Ashoka Industries, 173-B, Dadanagar, Kanpur	Electroplating Job Work	26°45'338"	80°29'414"	Metal Surface Treatment	No	0	Ganda Nala drain/Pandu/Ganga	Valid	Valid
34	Avon Dyeing, 41-A, Industrial Area, Dada Nagar, Kanpur, U.P	Dyed Grey Cloth	26°45'338"	80°29'414"	Dyeing	Yes	9	Ganda Nala drain/Pandu/Ganga	Closed	Closed
35	B.K.Auto Enterprises, F-61, Panki Site-5, Kanpur	Electroplating Job Work	26°45'338"	80°29'414"	Metal Surface Treatment	Yes	5	Ganda Nala drain/Pandu/Ganga	Valid	Valid

36	Chawla Textiles. 92-A, Industrial Area, Dada Nagar, Kanpur ,U.P.	Dyed Grey Cloth	26°45'338"	80°29'414"	Dyeing & Textile	Yes	7	Ganda Nala drain/Pandu/Ganga	Under Consideration	Under Consideration
37	Diamond Hosiery, 29 B, Dadanagar, Kanpur	Dyed Grey Cloth	26°45'338"	80°29'414"	Yarn/Textile Processing	Yes	10	Ganda Nala drain/Pandu/Ganga	Valid	Valid
38	Field Gun Factory Kalpi Road, Kanpur	Defence Arms & Amuation Equipments	26°45'983"	80°25'567"	Arms Equipments (electroplating )	Yes	70	Ganda Nala drain/Pandu/Ganga	Valid	Valid
39	Ganga Textile, C-23, Panki Site-5, Kanpur	Dyed Grey Cloth	26°45'338"	80°29'414"	Yarn/Textile Processing	Yes	8	Ganda Nala drain/Pandu/Ganga	Valid	Valid
40	J.K. Cotton Spinning & Weaving co.Mills Ltd., jarib chowki Kalpi Road, Kanpur pin code 208012	Closed	26°46'144"	80°30'529"	Dyeing & Textile	Yes	182	Ganda Nala drain/Pandu/Ganga	Closed	Closed
41	Jet Knitwears Pvt.Ltd., 57A, Dada Nagar, Kanpur	Bleach Grey Cloth	26°45'338"	80°29'414"	Yarn/Textile Processing	Yes	23	Ganda Nala drain/Pandu/Ganga	Under Consideration	Under Consideration
42	Kanpur Texcel (P) Ltd., 12 B/3 Dada Nagar Kanpur Nagar	Dyed Grey Cloth	26°45'338"	80°29'414"	Textile	Yes	12	Ganda Nala drain/Pandu/Ganga	Valid	Valid
43	A.K. Industries, 85 B, Dadanagar, Kanpur	Dyed Grey Cloth	26°45'338"	80°29'414"	Yarn/Textile Processing	Yes	3	Ganda Nala drain/Pandu/Ganga	Closed	Closed
44	Krishna Textile, Dadanagar, Kanpur	Closed	26°45'338"	80°29'414"	Yarn/Textile Processing	Yes	3	Ganda Nala drain/Pandu/Ganga	Closed	Closed
45	M.J. Dyeing (India Dying Works ), F-8 Site- 5, Panki, Kanpur	Tarpoline	26°46'306"	80°30'215"	Dyeing	Yes	12	Ganda Nala drain/Pandu/Ganga	Valid	Valid
46	Mahadev Pulp Prod., 176 B, Dada Nagar, Kanpur	Craft Paper	26°45'338"	80°29'414"	Craft Paper	Yes	7.5	Ganda Nala drain/Pandu/Ganga	Closed	Closed
47	Mahalaxmi Textile Ind., 155 B Dada Nagar, Kanpur	Dyed Grey Cloth	26°45'338"	80°29'414"	Textile	No	0	Ganda Nala drain/Pandu/Ganga	Closed	Closed

48	Ordnance Factory Kalpi Road, Kanpur	Defence Arms & Amuation Equipments	26°45'80"	80°28'65"	Arms Equipments	Yes	140	Ganda Nala drain/Pandu/Ganga	Valid	Valid
49	Quality Pumps, 1-B/1ADadanagar, Kanpur	Electroplating Job Work	26°45'338"	80°29'414"	Galvonizing	Yes	5	Ganda Nala drain/Pandu/Ganga	Under Considration	Under Considration
50	Quality Zippers Pvt. Ltd. Plot No. 39 – B, Dada Nagar, Industrial Area, Kanpur.	Zip	26°45'338"	80°29'414"	Dyeing	Yes	7	Ganda Nala drain/Pandu/Ganga	Valid	Valid
51	Rotomark System Pvt. Ltd., 123/355, Fazalganj, Kanpur	Roto Gravior Printing Cylinder	26°46'144"	80°30'529"	Electroplating	Yes	0	Ganda Nala drain/Pandu/Ganga	Valid	Valid
52	Shakti Dyeing & Bleaching works, 16 A, Dada Nagar, Kanpur, U.P.	Dyed Grey Cloth	26°45'338"	80°29'414"	Bleaching	Yes	2	Ganda Nala drain/Pandu/Ganga	Valid	Valid
53	Shikhar Textile & Bleaching( Old Name Basudev Printer), 18 B Dada Nagar, Kanpur.	Tarpoline	26°45'338"	80°29'414"	Dyeing	Yes	14	Ganda Nala drain/Pandu/Ganga	Closed	Closed
54	Slaughter House, Fazalganj, Kanpur	Meet	26°46'144"	80°30'529"	Slaughtering of 20 Pigs/Day	No	0	Ganda Nala drain/Pandu/Ganga	Closed	Closed
55	Small Arms Factory, Kalpi Road, Kanpur	Defence Arms & Amuation Equipments	26°45'983"	80°25'567"	Arms (Electroplating)	Yes	180	Ganda Nala drain/Pandu/Ganga	Valid	Valid
56	Super Dyeing & Bleaching Works, Plot No. 39 A, Dada Nagar, Kanpur, U.P.	Dyed Grey Cloth	26°45'338"	80°29'414"	Bleaching	Yes	0	Ganda Nala drain/Pandu/Ganga	Closed	Closed
57	Tasty Dairy Specialties Ltd., C2, C5, Site 5, Panki , Kanpur	Closed	26°45'338"	80°29'414"	Dairy	Yes	0	Ganda Nala drain/Pandu/Ganga	Closed	Closed
58	Textile & Dyeing unit, Dada Nagar, Kanpur.	Dyed Grey Cloth	26°45'338"	80°29'414"	Dyeing	NR	0	Ganda Nala drain/Pandu/Ganga	Closed	Closed

59	Tilak Dyes Prod., A-98, Dada Nagar, Kanpur	Dyed Grey Cloth	26°45'338"	80°29'414"	Dyeing	NR	0	Ganda Nala drain/Pandu/Ganga	Closed	Closed
60	U.P. Pump pvt Ltd.Dada Nagar Kanpur.	Electroplating Job Work	26°45'338"	80°29'414"	Galvonizing	Yes	3	Ganda Nala drain/Pandu/Ganga	Under Considratiion	Under Considratiion
61	Usha Hosiery, G-30, Site-5, Panki Kanpur	Closed	26°45'338"	80°29'414"	Yarn/Textile Processing	Yes	8	Ganda Nala drain/Pandu/Ganga	Closed	Closed
62	Panki Thermal Power Stations, Panki., Kanpur, U.P.	Closed	26°47'66"	80°24'1"	Thermal Power	Yes		Thermal power Nala drain/Pandu/Ganga	Closed	Closed
63	Slaughter House, Bakarganj, Babupurwa, Kanpur	Meet	26°47'70.6"	80°34'62.2"	Slaughtering of 40 Goats/Day	NA	0	COD Nala Nala drain/Pandu/Ganga	Closed	Closed
64	Anoo Shukla Ka Dyeing Plant,(Rita Knittwear) F-8, UPSIDC, Rooma, Kanpur	Dyed Grey Cloth	26°35'93"	80°43'75"	Yarn/Textile Processing	PETP/CETP	35	Irrigation Canal/Ganga River	Valid	Valid
65	Ganga Knit Fab, C-98, Rooma Industrial Area, Kanpur	Dyed Grey Cloth	26°35'93"	80°43'75"	Yarn/Textile Processing	PETP/CETP	35	Irrigation Canal/Ganga River	Valid	Valid
66	J.S. Yarn Taxtile Pvt.Ltd., C-33, Rooma Industrial Area, Kanpur	Dyed Grey Cloth	26°35'93"	80°43'75"	Yarn/Textile Processing	PETP/CETP	35	Irrigation Canal/Ganga River	Valid	Valid
67	K Vinayak Coatsons, Plot No. C-21, Rooma Industrial Area, Kanpur	Dyed Grey Cloth	26°35'93"	80°43'75"	Yarn/Textile Processing	PETP/CETP	40	Irrigation Canal/Ganga River	Valid	Valid
68	K.S.M. Hosery, G-2, G-3, Rooma Industrial Area, Kanpur	Dyed Grey Cloth	26°35'93"	80°43'75"	Yarn/Textile Processing	PETP/CETP	35	Irrigation Canal/Ganga River	Valid	Valid
69	Nirbhay Industries, A-3, Rooma Industrial Area, Kanpur	Dyed Grey Cloth	26°35'93"	80°43'75"	Yarn/Textile Processing	PETP/CETP	128	Irrigation Canal/Ganga River	Valid	Valid
70	Radhey Processor, C-40, UPSIDC Rooma, Kanpur	Dyed Grey Cloth	26°35'93"	80°43'75"	Yarn/Textile Processing	PETP/CETP	128	Irrigation Canal/Ganga River	Valid	Valid
71	Sam Taxtile, B-44, Rooma Industrial Area, Kanpur	Dyed Grey Cloth	26°35'93"	80°43'75"	Yarn/Textile Processing	PETP/CETP	50	Irrigation Canal/Ganga River	Valid	Valid

72	Shatabdi Synthetic, Plot No C-23, Rooma Industrial Area, Kanpur	Dyed Grey Cloth	26°35'93"	80°43'75"	Yarn/Textile Processing	PETP/CETP	35	Irrigation Canal/Ganga River	Valid	Valid
73	Subh Tax, Plot No. D-27, Rooma Industrial Area, Kanpur	Dyed Grey Cloth	26°35'93"	80°43'75"	Yarn/Textile Processing	PETP/CETP	35	Irrigation Canal/Ganga River	Valid	Valid
74	V.S. Textile, B-42, Rooma, Kanpur	Dyed Grey Cloth	26°35'93"	80°43'75"	Yarn/Textile Processing	PETP/CETP	35	Irrigation Canal/Ganga River	Valid	Valid
75	A STAR TANNERS MANOHAR NGR. JAJMAU	Finished Leather	26°25'56"	80°24'6"	Tannery	PETP/CETP	3.5	Irrigation Canal/Ganga River	Closed	Closed
76	A.K. Finishers, 44/37A(5), Ramrai Sarai, Jajmau, Kanpur	Finished Leather	26°25'56"	80°24'6"	Tannery	PETP/CETP	3.5	Irrigation Canal/Ganga River	Valid	Valid
77	A.P.F.TANNERS(SABNAM TANNERY) 70/59 , SHITLA BAZAR , JAJMAU	Finished Leather	26°25'56"	80°24'6"	Tannery	PETP/CETP	21	Irrigation Canal/Ganga River	Valid	Valid
78	AAMAN TANNERS , 104/98(20) , SANJAY NAGAR , JAJMAU	Finished Leather	26°25'14"	80°24'60"	Tannery	PETP/CETP	21	Irrigation Canal/Ganga River	Valid	Valid
79	ABDULLA TANNERS PVT.LTD. , 16 B , GAJJUPURWA , JAJMAU	Finished Leather	26°25'56"	80°24'6"	Tannery	PETP/CETP	42	Irrigation Canal/Ganga River	Valid	Valid
80	AFTAB & COMPANY (Shaukat Ki Tannery), 396 Sanjay Nagar, Wajidpur, Jajmau, kanpur	Finished Leather	26°25'14"	80°24'60"	Tannery	PETP/CETP	3.5	Irrigation Canal/Ganga River	Valid	Valid
81	AHIRWAR KI TANNERY , OPP. SULATAN , JAJMAU	Finished Leather	26°25'56"	80°24'6"	Tannery	PETP/CETP	0	Irrigation Canal/Ganga River	Closed	Closed
82	AHMAD BILAL KI TANNERY , 187/183 ,GAJJUPURWA , JAJMAU	Finished Leather	26°25'56"	80°24'6"	Tannery	PETP/CETP	21	Irrigation Canal/Ganga River	Valid	Valid
83	AHMAD INTERNATIONAL , 367,368 , A , SANJAY NAGAR , JAJMAU	Finished Leather	26°25'14"	80°24'60"	Tannery	PETP/CETP	21	Irrigation Canal/Ganga River	Valid	Valid



84	AHMAD LEATHER IND. 102/88, A-9(1), WAJIDPUR, JAJMAU	Finished Leather	26°25'14"	80°24'60"	Tannery	PETP/CETP	21	Irrigation Canal/Ganga River	Valid	Valid
85	AHMAD TANNING IND. , 3 B , 150 FEET ROAD, JAJMAU	Finished Leather	26°25'14"	80°24'60"	Tannery	PETP/CETP	21	Irrigation Canal/Ganga River	Valid	Valid
86	Ahteshyam leather & Leather Product (Old Name Nasir Ki Tannery), Shitala Bajar, Jajmau, Kanpur	Finished Leather	26°25'56"	80°24'6"	Tannery	PETP/CETP	10.5	Irrigation Canal/Ganga River	Valid	Valid
87	AIJAJ TANNERS , 16-D, 150 FT. ROAD , JAJMAU	Finished Leather	26°25'14"	80°24'60"	Tannery	PETP/CETP	49	Irrigation Canal/Ganga River	Closed	Closed
88	AIJAJ TANNERS 406/377 ASARFABAD JAJMAU	Finished Leather	26°25'56"	80°24'6"	Tannery	PETP/CETP	3.5	Irrigation Canal/Ganga River	Closed	closed
89	AISHA TANNING IND. , 3 A , 150 Fit Road JAJMAU	Finished Leather	26°25'14"	80°24'60"	Tannery	PETP/CETP	21	Irrigation Canal/Ganga River	Valid	Valid
90	AJANTA TANNING IND. , 90/76 B , IDGAH ROAD , JAJMAU	Finished Leather	26°25'14"	80°24'60"	Tannery	PETP/CETP	21	Irrigation Canal/Ganga River	Valid	Valid
91	AKHTAR TANNERS , 112 A , WAJIDPUR , JAJMAU	Finished Leather	26°25'14"	80°24'60"	Tannery	PETP/CETP	21	Irrigation Canal/Ganga River	Valid	Valid
92	AKLAKH TANNERS 104 /99 GAJJUPURWA JAJMAU	Finished Leather	26°25'56"	80°24'6"	Tannery	PETP/CETP	3.5	Irrigation Canal/Ganga River	Valid	Valid
93	Albarkah Tannery PVT LTD. 173/157- A25,BUDHIYAGHAT JAJMAU,	Finished Leather	26°25'48"	80°24'38"	Tannery	PETP/CETP	77	Irrigation Canal/Ganga River	Valid	Valid
94	ALIG IND. , 36 A ,150 FT. ROAD JAJMAU , KANPUR	Finished Leather	26°25'14"	80°24'60"	Tannery	PETP/CETP	70	Irrigation Canal/Ganga River	Valid	Valid
95	ALIG INTERNATIONAL , 150 FT. ROAD , JAJMAU	Finished Leather	26°26'18"	80°23'29"	Tannery	PETP/CETP	84	Irrigation Canal/Ganga River	Valid	Valid
96	Allianj Leather (Old Name Rafique Tannery), 184 A(5),	Finished Leather	26°25'48"	80°24'38"	Tannery	PETP/CETP	21	Irrigation Canal/Ganga River	Valid	Valid

	Buriyaghat, Jajmau, Kanpur									
97	ALLIED LETHER & LEATHER PROD. 51 A 150 FT. ROAD , JAJMAU	Finished Leather	26°25'14"	80°24'60"	Tannery	PETP/CETP	42	Irrigation Canal/Ganga River	Valid	Valid
98	ALLIES LEATHER EXPORT, JAJMAU Kanpur	Finished Leather	26°25'14"	80°24'60"	Tannery	PETP/CETP	0	Irrigation Canal/Ganga River	Closed	Closed
99	ALMIJAN TANNING IND. , 94 A , WAJIDPUR , JAJMAU	Finished Leather	26°25'14"	80°24'60"	Tannery	PETP/CETP	21	Irrigation Canal/Ganga River	Valid	Valid
100	ALRAHBAR LEATHERS PVT.LTD. 173/157 , BHURIYAGHAT , JAJMAU	Finished Leather	26°25'48"	80°24'38"	Tannery	PETP/CETP	21	Irrigation Canal/Ganga River	Closed	Closed
101	ALSABA TANNERS , 3-1 B , GAJJUPURWA , JAJMAU	Finished Leather	26°26'18"	80°23'29"	Tannery	PETP/CETP	21	Irrigation Canal/Ganga River	Closed	Closed
102	AMAN ENTERPRISES (TAJ TRADERS) 71/60, SEETALA BAZAR JAJMAU	Finished Leather	26°25'56"	80°24'6"	Tannery	PETP/CETP	3.5	Irrigation Canal/Ganga River	Valid	Valid
103	AMAN TANNERS(UNIT-2) , 104/90 A ,(17A) SANJAY NAGAR	Finished Leather	26°25'14"	80°24'60"	Tannery	PETP/CETP	21	Irrigation Canal/Ganga River	Closed	Closed
104	ANWAR Ahmad KI TANNERY , 175/158 , 4-C , BHURIYAGHAT , JAJMAU	Finished Leather	26°25'48"	80°24'38"	Tannery	PETP/CETP	14	Irrigation Canal/Ganga River	Valid	Valid
105	Arafat Leather Finishers. 201/194-B, Ramrai Sarai, Jajmau, Kanpur	Finished Leather	26°25'56"	80°24'6"	Tannery	PETP/CETP	21	Irrigation Canal/Ganga River	Valid	Valid
106	ARAFAT TANNERS(N.J.TANNERS) 201/194, SHEETLA BAZAR, JAJMAU	Finished Leather	26°25'56"	80°24'6"	Tannery	PETP/CETP	21	Irrigation Canal/Ganga River	Valid	Valid
107	ARSHI INTERPRISES (NAJULLA TANNERY) , 175/158 B-2 , BHURIYAGHAT , JAJMAU	Finished Leather	26°25'48"	80°24'38"	Tannery	PETP/CETP	17.5	Irrigation Canal/Ganga River	Valid	Valid

108	ASHA EXPORT (ASHA HIDES) 466/868 ,NEAR STATE BANK , JAJMAU	Finished Leather	26°25'56"	80°24'6"	Tannery	PETP/CETP	21	Irrigation Canal/Ganga River	Under Consideration	Under Consideration
109	ASHU CHARM UDYOG 96/82 JAJMAU RAOD JAJMAU	Finished Leather	26°25'48"	80°24'38"	Tannery	PETP/CETP	3.5	Irrigation Canal/Ganga River	Closed	Closed
110	ASIA LEATHER FINISERS , 150 FT. ROAD , JAJMAU	Finished Leather	26°26'18"	80°23'29"	Leather Board	PETP/CETP	0	Irrigation Canal/Ganga River	Under Consideration	Under Consideration
111	ASIA TANNERY PVT.LTD. , 1-A, PURANI CHUGGI , 1 A , JAJMAU	Finished Leather	26°26'18"	80°23'29"	Tannery	PETP/CETP	105	Irrigation Canal/Ganga River	Closed	Closed
112	ASIF LEATHER FINISERS , 27 A , 150 FT. ROAD , JAJMAU	Finished Leather	26°25'14"	80°24'60"	Tannery	PETP/CETP	21	Irrigation Canal/Ganga River	Valid	Valid
113	ASLAM TANNERS , 860-864, WAJIDPUR , JAJMAU	Finished Leather	26°25'14"	80°24'60"	Tannery	PETP/CETP	21	Irrigation Canal/Ganga River	Valid	Valid
114	ASLAM TANNERY , 42 A, BHURIYAGHAT , JAJMAU	Finished Leather	26°25'48"	80°24'38"	Tannery	PETP/CETP	7	Irrigation Canal/Ganga River	Closed	Closed
115	AWADH TANNERY ,333/307, BHALLA STATE , JAJMAU	Finished Leather	26°25'56"	80°24'6"	Tannery	PETP/CETP	14	Irrigation Canal/Ganga River	Closed	Closed
116	Aziz LEATHER FINISERS , 171/155 , BHURIYAGHAT , JAJMAU	Finished Leather	26°25'48"	80°24'38"	Tannery	PETP/CETP	45.5	Irrigation Canal/Ganga River	Valid	Valid
117	BABA HIDE (ZOELEATHER FINISERS) 87/1,, WAJIDPUR , JAJMAU	Finished Leather	26°25'14"	80°24'60"	Tannery	PETP/CETP	42	Irrigation Canal/Ganga River	Valid	Valid
118	BABLU INTERPRISES 90/76, B.K.U. HADDI MEEL CHAURAHA	Finished Leather	26°25'14"	80°24'60"	Tannery	PETP/CETP	3.5	Irrigation Canal/Ganga River	Valid	Valid
119	BEST TANNING IND. , 150 FT. ROAD , JAJMAU	Finished Leather	26°25'14"	80°24'60"	Tannery*	PETP/CETP	42	Irrigation Canal/Ganga River	Under Consideration	Under Consideration

120	BHARAT TANNING IND. , 150 FT. ROAD , JAJMAU	Finished Leather	26°25'14"	80°24'60"	Tannery	PETP/CETP	42	Irrigation Canal/Ganga River	Valid	Valid
121	BLUE STAR FINISERS , 996- 999 , WAJIDPUR , JAJMAU	Finished Leather	26°25'14"	80°24'60"	Tannery*	PETP/CETP	21	Irrigation Canal/Ganga River	Under Considration	Under Considration
122	BRIGHT TANNING IND. , IQBAL STREET , JAJMAU	Finished Leather	26°26'18"	80°23'29"	Tannery	PETP/CETP	28	Irrigation Canal/Ganga River	Closed	Closed
123	CARVAN TANNERS , 103 , 104 A , WAJIDPUR , JAJMAU	Finished Leather	26°25'14"	80°24'60"	Tannery	PETP/CETP	42	Irrigation Canal/Ganga River	Closed	Closed
124	CENTRAL LEATHER FINISHERS 112 A /4 WAZIDPUR JAJMAU	Finished Leather	26°25'14"	80°24'60"	Tannery	PETP/CETP	21	Irrigation Canal/Ganga River	Under Considration	Under Considration
125	CENTURY LEATHER , 82 A , WAJIDPUR , JAJMAU	Finished Leather	26°25'14"	80°24'60"	Tannery	PETP/CETP	21	Irrigation Canal/Ganga River	Valid	Valid
126	CHAUDHARI LEATHER FINISERS , OPP. SULTAN	Finished Leather	26°25'56"	80°24'6"	Tannery*	PETP/CETP	3.5	Irrigation Canal/Ganga River	Closed	Closed
127	CLASSIC TANNERS , 63 , 150 FT. ROAD , JAJMAU	Finished Leather	26°25'14"	80°24'60"	Tannery	PETP/CETP	0	Irrigation Canal/Ganga River	Closed	Closed
128	CLASSIC TANNIG IND. 102 /88 JAJMAU	Finished Leather	26°25'48"	80°24'38"	Tannery	PETP/CETP	35	Irrigation Canal/Ganga River	Closed	Closed
129	COMMERCIAL TANNERS, 94/80 , DARGH SARIF ROAD , JAJMAU	Finished Leather	26°25'56"	80°24'6"	Tannery	PETP/CETP	0	Irrigation Canal/Ganga River	Closed	Closed
130	COSMO TANNERS (INSHA LEATHER FINISERS) , 160 C, GAJJUPURWA , JAJMAU	Finished Leather	26°25'56"	80°24'6"	Tannery	PETP/CETP	21	Irrigation Canal/Ganga River	Under Considration	Under Considration
131	CROWN TANNERS , 192/184 , RAMRAI SARAI , JAJMAU	Finished Leather	26°25'56"	80°24'6"	Tannery	PETP/CETP	21	Irrigation Canal/Ganga River	Valid	Valid

132	CROWN TANNERS(PERFECT TANNERS) 531 , 150 FT. ROAD , JAJMAU	Finished Leather	26°25'14"	80°24'60"	Tannery	PETP/CETP	3.5	Irrigation Canal/Ganga River	Under Consideration	Under Consideration
133	CROWN TANNING IND.(NAW DURGA TANNERY) , 62 A , WAJIDPUR	Finished Leather	26°25'14"	80°24'60"	Tannery	PETP/CETP	21	Irrigation Canal/Ganga River	Valid	Valid
134	DANISH LEATHER 111B ,CHHABEELEPURWA JAJMAU	Finished Leather	26°26'18"	80°23'29"	Tannery	PETP/CETP	3.5	Irrigation Canal/Ganga River	Closed	Closed
135	DANISH TANNERS, 913, WAZIDPUR JAJMAU	Finished Leather	26°25'14"	80°24'60"	Tannery*	PETP/CETP	21	Irrigation Canal/Ganga River	Closed	Closed
136	DAWN (DON) TANNING IND.(ABIDA TANNING IND.)76 A ,IDGAH ROAD , JAJMAU	Finished Leather	26°25'56"	80°24'6"	Tannery	PETP/CETP	28	Irrigation Canal/Ganga River	Valid	Valid
137	DECENT LEATHER FINISERS , 40/39 , GAJJUPURWA , JAJMAU	Finished Leather	26°25'56"	80°24'6"	Tannery	PETP/CETP	21	Irrigation Canal/Ganga River	Valid	Valid
138	DELHI TANNERY , 395/366 , SHITLA BAZAR , JAJMAU , KANPUR	Finished Leather	26°25'56"	80°24'6"	Tannery	PETP/CETP	0	Irrigation Canal/Ganga River	Closed	Closed
139	DIAMOND TANNERS , WAJIDPUR , JAJMAU	Finished Leather	26°25'14"	80°24'60"	Tannery*	PETP/CETP	35	Irrigation Canal/Ganga River	Closed	Closed
140	EAGLE TANNERY, 425/390, MAKKU SAID KA BHATTA , JAJMAU	Finished Leather	26°26'18"	80°23'29"	Tannery	PETP/CETP	21	Irrigation Canal/Ganga River	Valid	Valid
141	EMCO IND. , 70 (A) 150 FT. ROAD , JAJMAU	Finished Leather	26°25'14"	80°24'60"	Tannery*	PETP/CETP	5.6	Irrigation Canal/Ganga River	Closed	Closed
142	EURO LEATHER (ISRAT KI TANNERY), 176/169, LALTUPURWA , JAJMAU	Finished Leather	26°25'56"	80°24'6"	Tannery	PETP/CETP	21	Irrigation Canal/Ganga River	Valid	Valid

143	EUROASIA LEATHER LTD. ,(Tajawar Husain ki Tannery) 101/87 B (A-1) WAJIDPUR JAJMAU	Finished Leather	26°25'56"	80°24'6"	Tannery	PETP/CETP	84	Irrigation Canal/Ganga River	Valid	Valid
144	EVEREST EXPORT , 175/158 B 3 , BHURIYAGHAT , JAJMAU	Finished Leather	26°25'48"	80°24'38"	Tannery	PETP/CETP	42	Irrigation Canal/Ganga River	Valid	Valid
145	EVEREST TANNERS , 184 C- 2 , BHURIYAGHAT , JAJMAU	Finished Leather	26°25'48"	80°24'38"	Tannery	PETP/CETP	21	Irrigation Canal/Ganga River	Valid	Valid
146	EVEREST TANNERY UPHOLSTERY DIVISION (FARHAT ZABI KI TANNERY) , 175/158 B-4 , BHURIYAGHAT , JAJMAU	Finished Leather	26°25'48"	80°24'38"	Tannery	PETP/CETP	70	Irrigation Canal/Ganga River	Valid	Valid
147	EVEREST TANNING IND. , (UNIT-2) , 184 B-1 , BHURIYAGHAT , JAJMAU	Finished Leather	26°25'48"	80°24'38"	Tannery	PETP/CETP	21	Irrigation Canal/Ganga River	Valid	Valid
148	EVEREST TANNING IND. , 97 A , WAJIDPUR , JAJMAU	Finished Leather	26°25'14"	80°24'60"	Tannery	PETP/CETP	10.5	Irrigation Canal/Ganga River	Valid	Valid
149	EVERGREEN TANNERY , 90 A , WAJIDPUR , JAJMAU	Finished Leather	26°25'14"	80°24'60"	Tannery	PETP/CETP	21	Irrigation Canal/Ganga River	Valid	Valid
150	FAHIM LARI KI TENNERY 56/55 GAJJUPURWA JAJMAU	Finished Leather	26°25'56"	80°24'6"	Tannery	PETP/CETP	3.5	Irrigation Canal/Ganga River	Closed	Closed
151	FAK LEATHER FINISHERS, 76/65-21, B, RASULABAD LUCKNOW ROAD JAJMAU	Finished Leather	26°25'56"	80°24'6"	Tannery	PETP/CETP	3.5	Irrigation Canal/Ganga River	Valid	Valid
152	FALAK ENTERPRISES , 12/9 , GAJJUPURWA , JAJMAU	Finished Leather	26°25'56"	80°24'6"	Tannery	PETP/CETP	3.5	Irrigation Canal/Ganga River	Closed	Closed
153	FAMOUS TANNERY , 163/165 , LALTUPURWA , JAJMAU	Finished Leather	26°25'56"	80°24'6"	Tannery	PETP/CETP	21	Irrigation Canal/Ganga River	Closed	Closed
154	FARHAN TANNERS , 172/156 , BHURIYAGHAT,	Finished Leather	26°25'48"	80°24'38"	Tannery	PETP/CETP	21	Irrigation Canal/Ganga River	Valid	Valid

	WAJDPUR, JAJMAU									
155	FARJAM TANNERS , 416 A Purani Chungi JAJMAU Road	Finished Leather	26°25'56"	80°24'6"	Tannery	PETP/CETP	21	Irrigation Canal/Ganga River	Valid	Valid
156	FARJANA TANNERY , 406/377, ASARFABAD , JAJMAU	Finished Leather	26°25'56"	80°24'6"	Tannery	PETP/CETP	17.5	Irrigation Canal/Ganga River	Valid	Valid
157	FATIMA LEATHER CRAFT , 90 A/76 B , 150 FT. ROAD , JAJMAU	Finished Leather	26°25'14"	80°24'60"	Tannery	PETP/CETP	0	Irrigation Canal/Ganga River	Closed	Closed
158	Fida Hussain Tannery ( Nafees Leather Finishers), 24-A-175/158 A, Budhhighat, Jajmau, Dist: Kanpur, U.P.	Finished Leather	26°25'48"	80°24'38"	Tannery	PETP/CETP	3.5	Irrigation Canal/Ganga River	Valid	Valid
159	FINISHED LEATHER JOB WORK, 433/398, MAKKU SHAHEED KA BHATTA , JAJMAU	Finished Leather	26°26'18"	80°23'29"	Tannery	PETP/CETP	35	Irrigation Canal/Ganga River	Under Consideration	Under Consideration
160	FIRDOS TANNERY, DARGAH SARIF ROAD JAJMAU KANPUR	Finished Leather	26°25'48"	80°24'38"	Tannery	PETP/CETP	0	Irrigation Canal/Ganga River	Closed	Closed
161	FIROJ KI TANNERY , UPSANA TANNERY LANE , GAJJUPURWA , JAJMAU	Finished Leather	26°25'56"	80°24'6"	Tannery	PETP/CETP	21	Irrigation Canal/Ganga River	Under Consideration	Under Consideration
162	FIROJ TANNERS(I) , 379/1-D, IQBAL STREET , JAJMAU	Finished Leather	26°26'18"	80°23'29"	Tannery	PETP/CETP	42	Irrigation Canal/Ganga River	Under Consideration	Under Consideration
163	FIROJ TANNERS(II) , IQBAL STREET , JAJMAU	Finished Leather	26°26'18"	80°23'29"	Tannery*	PETP/CETP	21	Irrigation Canal/Ganga River	Closed	Closed
164	G.N. LEATHER 169 / 162 JAJMAU	Finished Leather	26°25'56"	80°24'6"	Tannery	PETP/CETP	3.5	Irrigation Canal/Ganga River	Under Consideration	Under Consideration

165	G.P. LEATHER PAHALWAN TANNERY UNIT -1 GAJJUPURWA JAJMAU	Finished Leather	26°25'56"	80°24'6"	Tannery	PETP/CETP	21	Irrigation Canal/Ganga River	Valid	Valid
166	G.S. TANNERS , 38 C , 150 FT. ROAD , JAJMAU	Finished Leather	26°25'14"	80°24'60"	Tannery	PETP/CETP	17.5	Irrigation Canal/Ganga River	Valid	Valid
167	GAJALA TANNERY (RAZZAK TANNERY) 189/172 , DARGHA SARIF ROAD , JAJMAU	Finished Leather	26°25'48"	80°24'38"	Tannery	PETP/CETP	21	Irrigation Canal/Ganga River	Valid	Valid
168	GAURI TANNERS (KAMRUDEEN KI TANNERY) 179 , LALTUPURWA	Finished Leather	26°25'56"	80°24'6"	Tannery	PETP/CETP	21	Irrigation Canal/Ganga River	Valid	Valid
169	GAUSH LEATHER FINISHERS BHALLA ESTATE JAJMAU	Finished Leather	26°25'56"	80°24'6"	Tannery	PETP/CETP	3.5	Irrigation Canal/Ganga River	Valid	Valid
170	GAZAL TANNING IND. 104 /90 1A WAZID PUR JAJMAU	Finished Leather	26°25'14"	80°24'60"	Tannery	PETP/CETP	21	Irrigation Canal/Ganga River	Valid	Valid
171	GEM TANNERS , 112A/3 , WAJIDPUR , JAJMAU	Finished Leather	26°25'14"	80°24'60"	Tannery*	PETP/CETP	21	Irrigation Canal/Ganga River	Valid	Valid
172	GLOBE IND. , 37 (B) , 150 FT. ROAD , JAJMAU	Finished Leather	26°25'14"	80°24'60"	Leather Board	PETP/CETP	5.6	Irrigation Canal/Ganga River	Valid	Valid
173	GLOBE IND. CORPORATION (UNIT-2) SANJAY NAGAR , JAJMAU (NEW GLOBE EXIM)	Finished Leather	26°25'14"	80°24'60"	Tannery	PETP/CETP	42	Irrigation Canal/Ganga River	Valid	Valid
174	Globe Leather Finishers (MUSTAQ AHMAD KI TANNERY),MAKKU SAEED KA BHATTA), 88 A Wajidpur, , JAJMAU	Finished Leather	26°25'14"	80°24'60"	Tannery	PETP/CETP	3.5	Irrigation Canal/Ganga River	Valid	Valid
175	GLOBE LEATHER INDUSTRIES (GLOBE IND. CORPORATION ) , 37 A , 150 FT. ROAD , JAJMAU	Finished Leather	26°25'14"	80°24'60"	Tannery	PETP/CETP	5.6	Irrigation Canal/Ganga River	Valid	Valid



176	GLOBE TANNERS , 52A , 150 FT. ROAD , JAJMAU	Finished Leather	26°25'14"	80°24'60"	Tannery	PETP/CETP	21	Irrigation Canal/Ganga River	Valid	Valid
177	GOLDEN ENTERPRISES, 175/158 A 25 D, BHUDHIA GHAT JAJMAU	Finished Leather	26°25'48"	80°24'38"	Tannery	PETP/CETP	3.5	Irrigation Canal/Ganga River	Valid	Valid
178	GOLDEN INTERPRISES (MUSTAK AHMAD KI TANNERY) , 90/76 C-1, HADDI MILL , JAJMAU	Finished Leather	26°25'48"	80°24'38"	Tannery	PETP/CETP	0	Irrigation Canal/Ganga River	Closed	Closed
179	GOLDEN TANNERY , MAKKU SAID KA BHATTA , JAJMAU	Finished Leather	26°26'18"	80°23'29"	Tannery	PETP/CETP	0	Irrigation Canal/Ganga River	Closed	Closed
180	GOLDSTAR LEATHER BOARD ,70, 150 FT. ROAD , JAJMAU	Finished Leather	26°25'14"	80°24'60"	Tannery*	PETP/CETP	7	Irrigation Canal/Ganga River	Closed	Closed
181	GOODWILL TANNERS , 98 A , WAJIDPUR , JAJMAU	Finished Leather	26°25'14"	80°24'60"	Tannery	PETP/CETP	21	Irrigation Canal/Ganga River	Valid	Valid
182	GREATER ARAFAT TANNERY PVT. LTD. 12 C , 150 FT. ROAD , JAJMAU	Finished Leather	26°25'14"	80°24'60"	Tannery	PETP/CETP	63	Irrigation Canal/Ganga River	Under Considration	Under Considration
183	GUDDU AHMAD KI TANNERY , BHURIYAGHAT , JAJMAU	Finished Leather	26°25'48"	80°24'38"	Tannery	PETP/CETP	0	Irrigation Canal/Ganga River	Closed	Closed
184	GUJRAT TANNERS , 104/90 A, PLOT NO, 369-370, SANJAY NAGAR , JAJMAU	Finished Leather	26°25'14"	80°24'60"	Tannery	PETP/CETP	21	Irrigation Canal/Ganga River	Valid	Valid
185	GULFAM NAVI BHAI KI TENNERY DTS ROAD JAJMAU	Finished Leather	26°26'18"	80°23'29"	Tannery	PETP/CETP	0	Irrigation Canal/Ganga River	Closed	Closed
186	GULJAR OVERSEASE , HINDUSTAN COMPOUNG , JAJMAU	Finished Leather	26°25'56"	80°24'6"	Tannery	PETP/CETP	21	Irrigation Canal/Ganga River	Under Considration	Under Considration
187	H RAHMAN TANNING INDUSTRIES 101 /87	Finished Leather	26°25'14"	80°24'60"	Tannery	PETP/CETP	21	Irrigation Canal/Ganga River	Valid	Valid

	WAZIDPUR JAJMAU									
188	H.K.TANNING , 150 FT. ROAD , JAJMAU	Finished Leather	26°25'14"	80°24'60"	Tannery*	PETP/CETP	21	Irrigation Canal/Ganga River	Valid	Valid
189	H.R.TRADERS , 111 F, CHABILEPURWA , JAJMAU , KANPUR	Finished Leather	26°26'18"	80°23'29"	Tannery	PETP/CETP	21	Irrigation Canal/Ganga River	Valid	Valid
190	H.S. LEATHER 34/142 GAJJU PURWA JAJMAU	Finished Leather	26°25'56"	80°24'6"	Tannery	PETP/CETP	3.5	Irrigation Canal/Ganga River	Closed	Closed
191	HABIB LEATHER FINISERS(HABIB TANNERY) , 14 b, 150 FT. ROAD , JAJMAU	Finished Leather	26°26'18"	80°23'29"	Tannery	PETP/CETP	42	Irrigation Canal/Ganga River	Valid	Valid
192	HABIB TANNERY PVT.LTD. , 15 B, 150 FT. ROAD , JAJMAU	Finished Leather	26°25'14"	80°24'60"	Tannery*	PETP/CETP	70	Irrigation Canal/Ganga River	Valid	Valid
193	HAFIZ SONS TANNERY , 93 A , WAJIDPUR , JAJMAU	Finished Leather	26°25'14"	80°24'60"	Tannery	PETP/CETP	42	Irrigation Canal/Ganga River	Valid	Valid
194	HAMID LEATHER FINISERS ,1-D, GAJJUPURWA, JAJMAU	Finished Leather	26°26'18"	80°23'29"	Tannery	PETP/CETP	42	Irrigation Canal/Ganga River	Closed	Closed
195	HAMRAJ TANNERS , 175/158 , B, BHURIYAGHAT , JAJMAU	Finished Leather	26°25'48"	80°24'38"	Tannery*	PETP/CETP	17.5	Irrigation Canal/Ganga River	Valid	Valid
196	HANIF LEATHER, 331/306 BHALLA ESTATE JAJMAU	Finished Leather	26°25'56"	80°24'6"	Tannery	PETP/CETP	3.5	Irrigation Canal/Ganga River	Valid	Valid
197	HAQ TANNERS , 97 A , WAJIDPUR , JAJMAU	Finished Leather	26°25'14"	80°24'60"	Tannery	PETP/CETP	24.5	Irrigation Canal/Ganga River	Valid	Valid
198	HARRIS LEATHER FINISERS , 15 B, 150 FT. ROAD , JAJMAU	Finished Leather	26°25'14"	80°24'60"	Tannery	PETP/CETP	42	Irrigation Canal/Ganga River	Valid	Valid
199	HARUN TANNING IND. , IQBAL STREET , JAJMAU	Finished Leather	26°26'18"	80°23'29"	Tannery	PETP/CETP	0	Irrigation Canal/Ganga River	Closed	Closed

200	HAYAT TANNERY ,, 37/A, GAJJPURWA, CHABILEYPURWA, MOTI NAGAR , JAJMAU	Finished Leather	26°26'18"	80°23'29"	Tannery	PETP/CETP	21	Irrigation Canal/Ganga River	Valid	Valid
201	HAZI IQABAL AND CO. PURANA NAM NAJ TANNING IND. RAM RAI SARAI 17 A , JAJMAU	Finished Leather	26°25'48"	80°24'38"	Tannery	PETP/CETP	21	Irrigation Canal/Ganga River	Closed	Closed
202	HEENA LEATHER EXIMS (ALVI LEATHER) 332 / 308 A 2B BHALLA ESTATE JAJMAU	Finished Leather	26°25'56"	80°24'60"	Tannery	PETP/CETP	3.5	Irrigation Canal/Ganga River	Valid	Valid
203	HILTON TANNING IND. 197 / 189 RAMRAISARAI JAJMAU	Finished Leather	26°25'48"	80°24'38"	Tannery	PETP/CETP	42	Irrigation Canal/Ganga River	Closed	Closed
204	HIMALYA TANNERS , 150 FT. ROAD , JAJMAU	Finished Leather	26°26'18"	80°23'29"	Tannery	PETP/CETP	35	Irrigation Canal/Ganga River	Valid	Valid
205	HINA INTERPRISES , RAM RAI SARAI , JAJMAU	Finished Leather	26°25'48"	80°24'38"	Tannery	PETP/CETP	0	Irrigation Canal/Ganga River	Closed	Closed
206	HINDUSTAN TANNERY PVT. LTD. JAJMAU	Finished Leather	26°25'56"	80°24'6"	Tannery	PETP/CETP	0	Irrigation Canal/Ganga River	Closed	Closed
207	HOMERA TANNING IND. ,I D(17-A-1) 150 FT. ROAD , JAJMAU	Finished Leather	26°26'18"	80°23'29"	Tannery	PETP/CETP	105	Irrigation Canal/Ganga River	Valid	Valid
208	HUDA HIDE AGENCY (KAZI LEATHER) 177-A, CHHABEELEPURWA JAJMAU	Finished Leather	26°26'18"	80°23'29"	Tannery	PETP/CETP	21	Irrigation Canal/Ganga River	Closed	Closed
209	I.A. Chemical (AMIN ENTERPRISES), 71 /60 A, SEETALABAZAR JAJMAU	Finished Leather	26°25'56"	80°24'6"	Tannery	PETP/CETP	3.5	Irrigation Canal/Ganga River	Valid	Valid
210	ILAHY TANNERY , 43/36 , SITLA BAZAR , JAJMAU	Finished Leather	26°25'56"	80°24'6"	Tannery	PETP/CETP	3.5	Irrigation Canal/Ganga River	Valid	Valid

211	IMPERIAL LEATHER FINISERS PVT.LTD. , CHABILEPURWA , JAJMAU	Finished Leather	26°26'18"	80°23'29"	Tannery	PETP/CETP	21	Irrigation Canal/Ganga River	Valid	Valid
212	INDIA INTERPRISES(GREATER INTERPRISES) 90/76 C, 150 FT. ROAD , JAJMAU	Finished Leather	26°25'14"	80°24'60"	Tannery	PETP/CETP	10.5	Irrigation Canal/Ganga River	Valid	Valid
213	INDIAN NATIONAL TANNERY, PURANI CHUNGI JAJMAU	Finished Leather	26°26'18"	80°23'29"	Tannery	PETP/CETP	115.5	Irrigation Canal/Ganga River	Closed	Closed
214	INDIAN TANNING IND. , 150 FT. ROAD , JAJMAU	Finished Leather	26°25'14"	80°24'60"	Tannery*	PETP/CETP	210	Irrigation Canal/Ganga River	Valid	Valid
215	INTERNATIONAL TANNING IND. , 645 , WAJIDPUR , JAJMAU	Finished Leather	26°25'14"	80°24'60"	Tannery	PETP/CETP	21	Irrigation Canal/Ganga River	Valid	Valid
216	INTERNATIONAL TANNING IND. , SHITALA BAZAR , JAJMAU	Finished Leather	26°25'56"	80°24'6"	Tannery	PETP/CETP	140	Irrigation Canal/Ganga River	Closed	Closed
217	IQBAL & CO. , ASARFABAD , JAJMAU	Finished Leather	26°25'56"	80°24'6"	Tannery	PETP/CETP	21	Irrigation Canal/Ganga River	Valid	Valid
218	IQBAL AHAMAD KI TANNERY, 71/60 A, SEETALA BAZAR, JAJMAU	Finished Leather	26°25'56"	80°24'6"	Tannery	PETP/CETP	3.5	Irrigation Canal/Ganga River	Valid	Valid
219	IQBAL AHAMAD KI TANNERY 12/9 BANAWARILAL KA BAGICHAA JAJMAU	Finished Leather	26°25'56"	80°24'6"	Tannery	PETP/CETP	3.5	Irrigation Canal/Ganga River	Closed	Closed
220	IQBAL TANNERS , 16-C, 150 FT. ROAD , JAJMAU	Finished Leather	26°26'18"	80°23'29"	Tannery	PETP/CETP	42	Irrigation Canal/Ganga River	Closed	Closed
221	IQBAL TANNERS, 6-D , 92/87 , GAJJUPURWA JAJMAU, Kanpur	Finished Leather	26°25'56"	80°24'6"	Tannery	PETP/CETP	14	Irrigation Canal/Ganga River	Closed	Closed
222	Iqbal Tannery (Afaque Export, 345/317, Jajmau, kanpur	Finished Leather	26°25'56"	80°24'6"	Tannery	PETP/CETP	35	Irrigation Canal/Ganga River	Closed	Closed

223	IRFAN TANNERS , 75 A , Idgah Road WAJIDPUR , JAJMAU	Finished Leather	26°25'14"	80°24'60"	Tannery	PETP/CETP	21	Irrigation Canal/Ganga River	Valid	Valid
224	IRFAN TENNARY, 70/59, SHEETLA BAZAR, JAJMAU ROAD JAJMAU	Finished Leather	26°25'56"	80°24'6"	Tannery	PETP/CETP	3.5	Irrigation Canal/Ganga River	Valid	Valid
225	IRSHAD KI TANNERY(Irshaad Split Works) , 391/362, SEETALA BAZAR JAJMAU	Finished Leather	26°25'56"	80°24'6"	Tannery	PETP/CETP	3.5	Irrigation Canal/Ganga River	Valid	Valid
226	ISHRAT FINISERS INDUSTRIES, 173/166 , LALTUPURWA , JAJMAU	Finished Leather	26°25'56"	80°24'6"	Tannery	PETP/CETP	17.5	Irrigation Canal/Ganga River	Valid	Valid
227	ISLAM LEATHER FINISERS, 34/141, GAJJU PURWA, JAJMAU	Finished Leather	26°25'56"	80°24'6"	Tannery	PETP/CETP	3.5	Irrigation Canal/Ganga River	Valid	Valid
228	ISLAM TANNERS, 93/79, C- 150 FT. ROAD, JAJMAU , KANPUR	Finished Leather	26°25'14"	80°24'60"	Tannery	PETP/CETP	42	Irrigation Canal/Ganga River	Valid	Valid
229	J.N. INTERNATIONAL (JALALU KI TANNERY) 391/362 SEETALA BAZAR JAJMAU	Finished Leather	26°25'56"	80°24'6"	Tannery	PETP/CETP	3.5	Irrigation Canal/Ganga River	Valid	Valid
230	JAI BHARAT INTERPRISES, 2 A, BHALLA ESTATE, JAJMAU	Finished Leather	26°25'56"	80°24'6"	Tannery	PETP/CETP	3.5	Irrigation Canal/Ganga River	Valid	Valid
231	JAJMAU LEATHERS FIFNISHERS (BIHARI TENNERY) 16 B-1, JAJMAU	Finished Leather	26°26'18"	80°23'29"	Tannery	PETP/CETP	21	Irrigation Canal/Ganga River	Closed	Closed
232	JAMAL IND , 7/2 , GAJJUPURWA , JAJMAU	Finished Leather	26°26'18"	80°23'29"	Tannery	PETP/CETP	21	Irrigation Canal/Ganga River	Valid	Valid
233	JAMEEL AHAMAD 12/9 BANAWARILAL KA BAGICHA GAJJUPURWA	Finished Leather	26°25'56"	80°24'6"	Tannery	PETP/CETP	0	Irrigation Canal/Ganga River	Closed	Closed

234	JISHAN TRADING CO.(SAHBUDDIN KI TANNERY) 71/60 A(4), SEETALABAZAR JAJMAU	Finished Leather	26°25'56"	80°24'6"	Tannery	PETP/CETP	3.5	Irrigation Canal/Ganga River	Valid	Valid
235	JOHARA TANNERY 168 /161 GAJJU PURWA JAJMAU	Finished Leather	26°25'56"	80°24'6"	Tannery	PETP/CETP	3.5	Irrigation Canal/Ganga River	Closed	Closed
236	Junaid Tannery (Infront of Falak Enterprises, Gajjupurwa, Jajmau, Kanpur.	Finished Leather	26°25'56"	80°24'6"	Tannery	PETP/CETP	0	Irrigation Canal/Ganga River	Closed	Closed
237	JUNAID TANNING IND. , 93/79 A, IDGAH ROAD , JAJMAU	Finished Leather	26°25'14"	80°24'60"	Tannery	PETP/CETP	42	Irrigation Canal/Ganga River	Closed	Closed
238	K.C.TAIN, 101/87 , VAJIDPUR JAJMAU	Finished Leather	26°25'14"	80°24'60"	Tannery	PETP/CETP	7	Irrigation Canal/Ganga River	Closed	Closed
239	KAMAAL TANNING IND. , 43/36 , SHITLA BAZAR , JAJMAU	Finished Leather	26°25'56"	80°24'6"	Tannery	PETP/CETP	140	Irrigation Canal/Ganga River	Closed	Closed
240	KAMAL ENTERPRISES, 331/306-B, BHALLA ESTATE JAJMAU	Finished Leather	26°25'56"	80°24'6"	Tannery	PETP/CETP	3.5	Irrigation Canal/Ganga River	Valid	Valid
241	KANPUR TANNERY , 9/6 , GAJJUPURWA , JAJMAU	Finished Leather	26°25'48"	80°24'38"	Tannery	PETP/CETP	0	Irrigation Canal/Ganga River	Closed	Closed
242	KARAMAT TANNING IND. 783, SANJAY NAGAR , JAJMAU	Finished Leather	26°25'14"	80°24'60"	Tannery	PETP/CETP	21	Irrigation Canal/Ganga River	Valid	Valid
243	Karamat Tanning Industries (Old Name Allies Leather Export), 783A, Sanjay Nagar, wajidpur, Jajmau, Kanpur	Finished Leather	26°25'14"	80°24'60"	Tannery	PETP/CETP	21	Irrigation Canal/Ganga River	Closed	Closed
244	KASIF TANNERY , 16 B, GAJJUPURWA,, JAJMAU	Finished Leather	26°26'18"	80°23'29"	Tannery	PETP/CETP	21	Irrigation Canal/Ganga River	Closed	Closed

245	KHALID LEATHER FINISERS , 3 , GAJJUPURWA , JAJMAU	Finished Leather	26°25'56"	80°24'6"	Tannery	PETP/CETP	21	Irrigation Canal/Ganga River	Closed	Closed
246	KHALID TANNERS (SAJID TANNERS ) 86 A ,WAJIDPUR , JAJMAU	Finished Leather	26°25'14"	80°24'60"	Tannery	PETP/CETP	21	Irrigation Canal/Ganga River	Valid	Valid
247	KHALID TANNERY 9/6, ASARFABAD JAJMAU	Finished Leather	26°25'56"	80°24'6"	Tannery*	PETP/CETP	3.5	Irrigation Canal/Ganga River	Closed	Closed
248	KHAN LEATHER FINISHERS, MAKKU SAHID KA BHATTA JAJMAU	Finished Leather	26°26'18"	80°23'29"	Tannery	PETP/CETP	3.5	Irrigation Canal/Ganga River	Valid	Valid
249	KHATUN TANNERS(RASID TANNERS) , HIDUSTAN COMPOUND , JAJMAU	Finished Leather	26°25'48"	80°24'38"	Tannery*	PETP/CETP	21	Irrigation Canal/Ganga River	Valid	Valid
250	KHURSHEED ANWAR KI TENNERY 12/9 BANWARI KA BAGICHA JAJMAU	Finished Leather	26°25'56"	80°24'6"	Tannery	PETP/CETP	3.5	Irrigation Canal/Ganga River	Valid	Valid
251	KHWAJA FINISHERS, 381/360 A, SHEETLA BAZAR,JAJAMAU ROAD JAJMAU	Finished Leather	26°25'56"	80°24'6"	Tannery	PETP/CETP	3.5	Irrigation Canal/Ganga River	Valid	Valid
252	KOHINOOR TANNERS , JAJMAU	Finished Leather	26°26'18"	80°23'29"	Tannery	PETP/CETP	0	Irrigation Canal/Ganga River	Closed	Closed
253	Laeek Tanners (Madeena Traders), 117/124, Gajjupurwa, Jajmau, Kanpur	Finished Leather	26°25'56"	80°24'6"	Tannery	PETP/CETP	3.5	Irrigation Canal/Ganga River	Valid	Valid
254	LARI TANNERY (Moh. Ishaq, Moh. Ismile), JAJMAU ROAD , JAJMAU	Finished Leather	26°25'56"	80°24'6"	Tannery	PETP/CETP	210	Irrigation Canal/Ganga River	Valid	Valid
255	LEATHER AGE (ACME TANNERS) , HIDUSTAN COMPOUND , JAJMAU	Finished Leather	26°25'48"	80°24'38"	Tannery	PETP/CETP	84	Irrigation Canal/Ganga River	Valid	Valid
256	LEATHER IMBOSING , 379/D-3, IQBAL STREET , JAJMAU	Finished Leather	26°26'18"	80°23'29"	Tannery	PETP/CETP	21	Irrigation Canal/Ganga River	Valid	Valid

257	LEATHER LIFE, 77/66, SEETLA BAZAR JAJMAU	Finished Leather	26°25'56"	80°24'6"	Tannery	PETP/CETP	3.5	Irrigation Canal/Ganga River	Closed	Closed
258	LEATHER TEND (FAYAJ TANNERS), D.T.S. ROAD , JAJMAU	Finished Leather	26°26'18"	80°23'29"	Tannery	PETP/CETP	21	Irrigation Canal/Ganga River	Closed	Closed
259	LEATHER WORLD , 184 A-1 , WAJIDPUR , JAJMAU	Finished Leather	26°25'48"	80°24'38"	Tannery	PETP/CETP	42	Irrigation Canal/Ganga River	Valid	Valid
260	LEBERTY TANNERS INDIA DARGAH SARIF JAJMAU	Finished Leather	26°25'48"	80°24'38"	Tannery	PETP/CETP	0	Irrigation Canal/Ganga River	Closed	Closed
261	LEBERTY TANNERS, 173/157 Burhiaghat , JAJMAU	Finished Leather	26°25'48"	80°24'38"	Tannery	PETP/CETP	3.5	Irrigation Canal/Ganga River	Closed	Closed
262	LEEJA LEATHER , 330 /306 , BHALLA ESTATE, JAJMAU	Finished Leather	26°25'56"	80°24'6"	Tannery	PETP/CETP	3.5	Irrigation Canal/Ganga River	Valid	Valid
263	Liaba Leathers ( Old Name New Moon Light Tannery) 829 A, Wajidpur, Jajmau, Kanpur	Finished Leather	26°25'14"	80°24'60"	Tannery	PETP/CETP	14	Irrigation Canal/Ganga River	Valid	Valid
264	LIYAKAT LEATHER FINISERS (AMAN TANNERY) 127, IQBAL STREET , JAJMAU	Finished Leather	26°25'14"	80°24'60"	Tannery*	PETP/CETP	21	Irrigation Canal/Ganga River	Valid	Valid
265	LUCKY TANNERY , 88/75 B , DARGHA ROAD , JAJMAU	Finished Leather	26°25'56"	80°24'6"	Tannery	PETP/CETP	0	Irrigation Canal/Ganga River	Closed	Closed
266	M.A LEATHER, 159/152 B, LATTU PURWA JAJMAU	Finished Leather	26°25'56"	80°24'6"	Tannery	PETP/CETP	3.5	Irrigation Canal/Ganga River	Valid	Valid
267	M.H. TANNERS (HAZI BADDE TANNERY), 433,398, MAKKU SAID KA BHATTA , JAJMAU	Finished Leather	26°26'18"	80°23'29"	Tannery	PETP/CETP	42	Irrigation Canal/Ganga River	Valid	Valid
268	M.I.SADDEL WORK , 24 C , WAJIDPUR , JAJMAU	Finished Leather	26°25'14"	80°24'60"	Tannery*	PETP/CETP	21	Irrigation Canal/Ganga River	Closed	Closed
269	M.M. LEATHER FINISERS(ANNA TANNERY)	Finished Leather	26°25'14"	80°24'60"	Tannery	PETP/CETP	14	Irrigation Canal/Ganga River	Closed	Closed



	109/90 (E) WAJIDPUR , JAJMAU									
270	MAC INTERNATIONAL, 4 A, RAMRAI SARAI, RASOOLABAD ROAD JAJMAU ROAD JAJMAU	Finished Leather	26°25'56"	80°24'6"	Tannery	PETP/CETP	3.5	Irrigation Canal/Ganga River	Valid	Valid
271	MADINA TANNING IND. IDGHA ROAD , JAJMAU	Finished Leather	26°25'48"	80°24'38"	Tannery	PETP/CETP	0	Irrigation Canal/Ganga River	Closed	Closed
272	MAHBOOB SONS 104 /90 A 21, 150 FEET ROAD. KANPUR	Finished Leather	26°25'14"	80°24'60"	Tannery	PETP/CETP	21	Irrigation Canal/Ganga River	Valid	Valid
273	MAQDOOM TANNING IND. 103 /89 JAJMAU	Finished Leather	26°25'14"	80°24'60"	Tannery	PETP/CETP	17.5	Irrigation Canal/Ganga River	Valid	Valid
274	MASH INTERNATIONAL , 83/69 , HIDUSTAN COMPOUND , JAJMAU	Finished Leather	26°25'56"	80°24'6"	Tannery	PETP/CETP	21	Irrigation Canal/Ganga River	Valid	Valid
275	MERAJ TANNING IND. 102/87, WAJIDPUR , JAJMAU	Finished Leather	26°25'48"	80°24'38"	Tannery	PETP/CETP	70	Irrigation Canal/Ganga River	Valid	Valid
276	MERAZ LEATHER , 10 B BHALLA ESTATE JAJMAU	Finished Leather	26°25'56"	80°24'6"	Tannery	PETP/CETP	0	Irrigation Canal/Ganga River	Closed	Closed
277	MERCURY LEATHER INDUSTRIES, 265 , WAJIDPUR , JAJMAU	Finished Leather	26°25'14"	80°24'60"	Tannery	PETP/CETP	21	Irrigation Canal/Ganga River	Valid	Valid
278	MERIT LEATHER FINISERS , 414 , SANJAY NAGAR , JAJMAU	Finished Leather	26°25'14"	80°24'60"	Tannery	PETP/CETP	77	Irrigation Canal/Ganga River	Valid	Valid
279	MERIT LEATHER PROD. , 91 A , WAJIDPUR , JAJMAU	Finished Leather	26°25'14"	80°24'60"	Tannery	PETP/CETP	28	Irrigation Canal/Ganga River	Valid	Valid
280	Minar Industries (Old Name Hindustan Tannery Pvt.LTd.), 1133/1134, Wajidpur, Jajmau, kanpur	Finished Leather	26°25'14"	80°24'60"	Tannery	PETP/CETP	140	Irrigation Canal/Ganga River	Closed	Closed

281	MINAR INDUSTRIES. , 401 , SANJAY NAGAR , JAJMAU	Finished Leather	26°25'14"	80°24'60"	Tannery	PETP/CETP	21	Irrigation Canal/Ganga River	Valid	Valid
282	MOBIN TANNERS , 91 A , WAJIDPUR , JAJMAU	Finished Leather	26°25'14"	80°24'60"	Tannery	PETP/CETP	28	Irrigation Canal/Ganga River	Valid	Valid
283	MODEL TANNERS , SHITLA BAZAR , JAJMAU	Finished Leather	26°25'56"	80°24'6"	Tannery	PETP/CETP	0	Irrigation Canal/Ganga River	Closed	Closed
284	MOH. RIZWAN KI TANNERS 169 GAJU PURWA JAJMAU	Finished Leather	26°25'56"	80°24'6"	Tannery	PETP/CETP	3.5	Irrigation Canal/Ganga River	Closed	Closed
285	MOIN TANNERS , 382/353, BANGALI GHAT JAJMAU	Finished Leather	26°25'56"	80°24'6"	Tannery	PETP/CETP	3.5	Irrigation Canal/Ganga River	Closed	Closed
286	MONA TANNING IND., MONA NAGAR , JAJMAU	Finished Leather	26°25'14"	80°24'60"	Tannery	PETP/CETP	35	Irrigation Canal/Ganga River	Valid	Valid
287	MUGIZ TANNERS, 329/308, BHALLA ESTATE, JAJMAU KANPUR	Finished Leather	26°25'56"	80°24'6"	Tannery*	PETP/CETP	10.5	Irrigation Canal/Ganga River	Valid	Valid
288	MUSTAFIJ AHMAD KI TANNERY , 964 K , WAJIDPUR , JAJMAU	Finished Leather	26°25'14"	80°24'60"	Tannery	PETP/CETP	21	Irrigation Canal/Ganga River	Valid	Valid
289	N.R. TANNERS ,175/158 F- 1, BHURIYAGHAT , JAJMAU	Finished Leather	26°25'48"	80°24'38"	Tannery	PETP/CETP	14	Irrigation Canal/Ganga River	Valid	Valid
290	N.R. Tanners Unit-2, 175/158, F-2, Buiaghat, Jajmau, Kanpur	Finished Leather	26°25'48"	80°24'38"	Tannery	PETP/CETP	7	Irrigation Canal/Ganga River	Valid	Valid
291	N.S. TANNERS , 84-A , WAJIDPUR , JAJMAU	Finished Leather	26°25'14"	80°24'60"	Tannery	PETP/CETP	17.5	Irrigation Canal/Ganga River	Valid	Valid
292	N.S. TANNERS , UNIT-2 , 83A , WAJIDPUR , JAJMAU	Finished Leather	26°25'14"	80°24'60"	Tannery	PETP/CETP	21	Irrigation Canal/Ganga River	Valid	Valid
293	NADIRI EXPORT 150 FEED ROAD JAJMAU	Finished Leather	26°26'18"	80°23'29"	Tannery	PETP/CETP	0	Irrigation Canal/Ganga River	Closed	Closed
294	NADIRI LATHER FINISHERS 150 ROAD JAJMAU	Finished Leather	26°26'18"	80°23'29"	Tannery	PETP/CETP	42	Irrigation Canal/Ganga River	Closed	Closed

295	NADIRI TANNING IND. , 96 A , WAJIDPUR , JAJMAU	Finished Leather	26°25'14"	80°24'60"	Tannery	PETP/CETP	42	Irrigation Canal/Ganga River	Valid	Valid
296	Nafis Ki Tannery, (N.A. Traders) Chhabilepurwa, Jajmau, kanpur	Finished Leather	26°26'18"	80°23'29"	Tannery	PETP/CETP	3.5	Irrigation Canal/Ganga River	Valid	Valid
297	NAGAURI TANNING IND. 102/88-A(3) WAJIDPUR , JAJMAU	Finished Leather	26°25'14"	80°24'60"	Tannery	PETP/CETP	35	Irrigation Canal/Ganga River	Valid	Valid
298	NAUSAD LEATHER FINISERS , 30 A , IDGAH ROAD , JAJMAU	Finished Leather	26°25'14"	80°24'60"	Tannery	PETP/CETP	21	Irrigation Canal/Ganga River	Closed	Closed
299	NAVI LEATHER FINISHER , 58 A, 150 FT. ROAD , JAJMAU	Finished Leather	26°25'14"	80°24'60"	Tannery	PETP/CETP	3.5	Irrigation Canal/Ganga River	Closed	Closed
300	NAVRATAN TANNERY , 532, 33 , 150 FT. ROAD , JAJMAU	Finished Leather	26°25'14"	80°24'60"	Tannery	PETP/CETP	70	Irrigation Canal/Ganga River	Under Consideration	Under Consideration
301	NAZ LEATHER FINISERS , 14 A , 150 FT. ROAD , JAJMAU	Finished Leather	26°25'14"	80°24'60"	Tannery	PETP/CETP	35	Irrigation Canal/Ganga River	Valid	Valid
302	NAZ TANNERS , 111/5, 150 FT. ROAD , JAJMAU	Finished Leather	26°26'18"	80°23'29"	Tannery	PETP/CETP	17.5	Irrigation Canal/Ganga River	Closed	Closed
303	NAZ TRADERS 150 FEET ROAD JAJMAU	Finished Leather	26°26'18"	80°23'29"	Tannery	PETP/CETP	3.5	Irrigation Canal/Ganga River	Closed	Closed
304	NEW ERA INTERNATIONAL , 16 C , GAJJUPURWA , JAJMAU	Finished Leather	26°25'14"	80°24'60"	Tannery	PETP/CETP	42	Irrigation Canal/Ganga River	Valid	Valid
305	NEW ERA TANNING CENTRE 105 /100 GAJJU PURWA JAJMAU	Finished Leather	26°25'14"	80°24'60"	Tannery	PETP/CETP	21	Irrigation Canal/Ganga River	Valid	Valid
306	NEW JAVED TANNERY (AHIRWAR KI TANNERY) , 480/379 , GAJJPURWA JAJMAU	Finished Leather	26°25'56"	80°24'6"	Tannery	PETP/CETP	28	Irrigation Canal/Ganga River	Closed	Closed

307	NEW LEATHER LINE , 88/74 , 63 K 12 , HIDUSTAN COMPOUND , JAJMAU	Finished Leather	26°25'56"	80°24'6"	Tannery	PETP/CETP	14	Irrigation Canal/Ganga River	Valid	Valid
308	NEW LIGHT TANNERS , 59 A, 150 FT. ROAD , JAJMAU	Finished Leather	26°25'14"	80°24'60"	Tannery	PETP/CETP	84	Irrigation Canal/Ganga River	Valid	Valid
309	NEW LIGHT TANNERY PVT. LTD. 150 FEET ROAD JAJMAU	Finished Leather	26°26'18"	80°23'29"	Tannery	PETP/CETP	0	Irrigation Canal/Ganga River	Closed	Closed
310	NEW LIGHT TANNING IND. ,125, 150 FT. ROAD , JAJMAU	Finished Leather	26°25'14"	80°24'60"	Tannery	PETP/CETP	84	Irrigation Canal/Ganga River	Valid	Valid
311	NEW MODERN INDIA TANNERY, 395 /366, SHEETLA BAZAR, JAJMAU	Finished Leather	26°25'56"	80°24'6"	Tannery	PETP/CETP	3.5	Irrigation Canal/Ganga River	Valid	Valid
312	NEW MOON LIGHT TANNERY] MAKKU SAEED KA BHATTA, JAJMAU	Finished Leather	26°26'18"	80°23'29"	Tannery	PETP/CETP	0	Irrigation Canal/Ganga River	Closed	Closed
313	New Taj leather finishers, 140 wajidpur, Jajmau, Kanpur	Finished Leather	26°25'14"	80°24'60"	Tannery*	PETP/CETP	21	Irrigation Canal/Ganga River	Closed	Closed
314	NEW UNIVERSAL TANNERY , 419/387, PURANI CHUNGI, JAJMAU	Finished Leather	26°26'18"	80°23'29"	Tannery	PETP/CETP	70	Irrigation Canal/Ganga River	Closed	Closed
315	NIDA TANNERS , 189/172 , JAJMAU ROAD , JAJMAU	Finished Leather	26°25'48"	80°24'38"	Tannery	PETP/CETP	21	Irrigation Canal/Ganga River	Valid	Valid
316	NISAR SONS(LARI TANNERY) , 166 , GAJJUPURWA , JAJMAU	Finished Leather	26°25'56"	80°24'6"	Tannery	PETP/CETP	21	Irrigation Canal/Ganga River	Under Considration	Under Considration
317	NISHA ENTERPRISES (OLD NAME SAUD KI TANNERS) 12/9 GAJJU PURWA JAJMAU	Finished Leather	26°25'56"	80°24'6"	Tannery	PETP/CETP	3.5	Irrigation Canal/Ganga River	Valid	Valid
318	NISHA TRADERS , 25/20 , GAJJUPURWA , JAJMAU	Finished Leather	26°25'56"	80°24'6"	Tannery	PETP/CETP	14	Irrigation Canal/Ganga River	Valid	Valid

319	Nivada Tanners (Kadeer Industry) 94/80, Jajmau Kanpur	Finished Leather	26°25'48"	80°24'38"	Tannery	PETP/CETP	21	Irrigation Canal/Ganga River	Valid	Valid
320	NIZAM TANNERS 46/45 GAJJU PURWA JAJMAU	Finished Leather	26°25'56"	80°24'6"	Tannery	PETP/CETP	3.5	Irrigation Canal/Ganga River	Valid	Valid
321	NOOR LEATHER FINISERS , GAJJUPURWA , JAJMAU	Finished Leather	26°25'56"	80°24'6"	Tannery	PETP/CETP	3.5	Irrigation Canal/Ganga River	Valid	Valid
322	NOOR TANNERS , 5 BLOCK B , 150 FT. ROAD , JAJMAU	Finished Leather	26°25'14"	80°24'60"	Tannery	PETP/CETP	21	Irrigation Canal/Ganga River	Valid	Valid
323	Noor Ullah Tanners (Old name Nishat Tanners), Wajidpur, Jajmau, Kanpur	Finished Leather	26°25'14"	80°24'60"	Tannery	PETP/CETP	21	Irrigation Canal/Ganga River	Valid	Valid
324	NORTHERN TANNERY , 150 FT. ROAD , JAJMAU	Finished Leather	26°26'18"	80°23'29"	Tannery	PETP/CETP	259	Irrigation Canal/Ganga River	Valid	Valid
325	NUSRAT TANNERY PVT.LTD. , 22/19 , GAJJPURWA , JAJMAU	Finished Leather	26°25'56"	80°24'6"	Tannery	PETP/CETP	24.5	Irrigation Canal/Ganga River	Closed	Closed
326	OMEGA INTERNATIONAL (RENNETS ESTERN EXPORT) 2B, 35 , RAMRAI SARAI , JAJMAU	Finished Leather	26°25'56"	80°24'6"	Tannery	PETP/CETP	105	Irrigation Canal/Ganga River	Valid	Valid
327	ORIENTAL TANNING IND. , 5 BLOCK B , 150 FT. ROAD , JAJMAU	Finished Leather	26°25'14"	80°24'60"	Tannery	PETP/CETP	24.5	Irrigation Canal/Ganga River	Closed	Closed
328	OVERSEASE TANNING CORPORATION , 3 B ,A-BLOCK , 150 FEET ROAD, JAJMAU	Finished Leather	26°25'14"	80°24'60"	Tannery	PETP/CETP	21	Irrigation Canal/Ganga River	Valid	Valid
329	PACIFIC LEATHER FINISERS , 197/189 , RAMRAI SARAI , JAJMAU	Finished Leather	26°25'56"	80°24'6"	Tannery	PETP/CETP	84	Irrigation Canal/Ganga River	Valid	Valid
330	PACIFIC LEATHER PVT.LTD. , 198/200 , GAJJPURWA, JAJMAU	Finished Leather	26°25'56"	80°24'6"	Tannery	PETP/CETP	42	Irrigation Canal/Ganga River	Closed	Closed

331	PAHALWAN TANNERY(UNIT-2) , GAJJUPURWA , JAJMAU	Finished Leather	26°26'18"	80°23'29"	Tannery	PETP/CETP	14	Irrigation Canal/Ganga River	Valid	Valid
332	PAHALWAN TANNERY(UNIT-3) GAJJUPURWA , JAJMAU	Finished Leather	26°25'56"	80°24'6"	Tannery	PETP/CETP	21	Irrigation Canal/Ganga River	Valid	Valid
333	PARADISE LEATHER FINFISHERS , 16 B(2), CHABEELEPURWA JAJMAU	Finished Leather	26°26'18"	80°23'29"	Tannery	PETP/CETP	3.5	Irrigation Canal/Ganga River	Valid	Valid
334	PARAMOUNT TANNERY IND. , 19 LALTUPURWA , JAJMAU	Finished Leather	26°25'56"	80°24'6"	Tannery	PETP/CETP	21	Irrigation Canal/Ganga River	Under Considration	Under Considration
335	PARK LEATHER(O.N.AJJ TANNERS) 58/47 , SHITLA BAZAR , JAJMAU	Finished Leather	26°25'56"	80°24'6"	Tannery	PETP/CETP	21	Irrigation Canal/Ganga River	Valid	Valid
336	PASHA TANNERS 8/5 B - 2 ASARFABAD JAJMAU	Finished Leather	26°25'56"	80°24'6"	Tannery	PETP/CETP	3.5	Irrigation Canal/Ganga River	Closed	Closed
337	PENJA LEATHERS , 104/90 (24B-3-D) SANJAY NAGAR , JAJMAU	Finished Leather	26°25'14"	80°24'60"	Tannery	PETP/CETP	42	Irrigation Canal/Ganga River	Valid	Valid
338	PENJA TANNING IND. PVT. LTD. , 104/90(23A) , SANJAY NAGAR	Finished Leather	26°25'14"	80°24'60"	Tannery	PETP/CETP	126	Irrigation Canal/Ganga River	Valid	Valid
339	PIONEER LEATHER FINISERS PVT.LTD. , 89/75 , 150 FT. ROAD , JAJMAU	Finished Leather	26°25'14"	80°24'60"	Tannery	PETP/CETP	0	Irrigation Canal/Ganga River	Closed	Closed
340	POPULAR TANNERY, DARGAH ROAD, JAJMAU	Finished Leather	26°43'191"	80°40'830"	Tannery	PETP/CETP	0	Irrigation Canal/Ganga River	Closed	Closed
341	PRIME TANNERS , 13 A , 150 FT. ROAD , JAJMAU	Finished Leather	26°25'14"	80°24'60"	Tannery	PETP/CETP	35	Irrigation Canal/Ganga River	Valid	Valid
342	PRINCE LEATHER, 331/306 A, BHALLA ESTATE JAJMAU	Finished Leather	26°25'56"	80°24'6"	Tannery	PETP/CETP	3.5	Irrigation Canal/Ganga River	Valid	Valid
343	QUAYUM LEATHER , 150 FT. ROAD , JAJMAU	Finished Leather	26°26'18"	80°23'29"	Tannery	PETP/CETP	42	Irrigation Canal/Ganga River	Valid	Valid

344	R.A.TRADE & IND. , 187/180 A , LALTUPURWA , JAJMAU	Finished Leather	26°25'56"	80°24'6"	Tannery	PETP/CETP	42	Irrigation Canal/Ganga River	Valid	Valid
345	R.B. TRADERS 156 /149 GAJJU PURWA JAJMAU	Finished Leather	26°25'56"	80°24'6"	Tannery	PETP/CETP	3.5	Irrigation Canal/Ganga River	Valid	Valid
346	R.K. TANNERS ,508 150 FT. ROAD , JAJMAU	Finished Leather	26°26'18"	80°23'29"	Tannery	PETP/CETP	42	Irrigation Canal/Ganga River	Valid	Valid
347	R.K.LEATHER FINISERS , 87- C(1) A, WAJIDPUR , JAJMAU	Finished Leather	26°26'18"	80°23'29"	Tannery	PETP/CETP	21	Irrigation Canal/Ganga River	Valid	Valid
348	RAHMAN Ind.LTD. ,(ALAM TANNERY)16D -1, 150 FT. ROAD , JAJMAU	Finished Leather	26°25'14"	80°24'60"	Tannery	PETP/CETP	84	Irrigation Canal/Ganga River	Valid	Valid
349	Rahman Ind.Ltd.(ALLAHDAD TANNERY), 99/85A , WAJIDPUR , JAJMAU	Finished Leather	26°25'14"	80°24'60"	Tannery	PETP/CETP	84	Irrigation Canal/Ganga River	Valid	Valid
350	Rahman Ind.Ltd.(SIKANDAR TANNERY PVT.LTD. .,ALLAHDAD TANNERY UNIT-3) GLOBE TANNERY ALLAHDAD UNIT -1,(N.C & S) (ALLAHDAD UNIT-2) 99/85A JAJMAU	Finished Leather	26°25'14"	80°24'60"	Tannery	PETP/CETP	84	Irrigation Canal/Ganga River	Valid	Valid
351	RAHMAT SONS LEATHER FINISERS(O.N.ATIF TANNERY) 103/96 , 150 FT. ROAD	Finished Leather	26°25'56"	80°24'6"	Tannery	PETP/CETP	21	Irrigation Canal/Ganga River	Closed	Closed
352	RAISH TANNERY 88/74C DARGAH ROAD JAJMAU	Finished Leather	26°25'56"	80°24'6"	Tannery	PETP/CETP	0	Irrigation Canal/Ganga River	Closed	Closed
353	RAJA INTERPRISES 12/9 BANAWARI LAL KA BAGICHA, JAJMAU	Finished Leather	26°25'56"	80°24'6"	Tannery	PETP/CETP	3.5	Irrigation Canal/Ganga River	Closed	Closed

354	RAJA TANNERY , 81 C, WAJIDPUR , JAJMAU	Finished Leather	26°25'14"	80°24'60"	Tannery	PETP/CETP	21	Irrigation Canal/Ganga River	Valid	Valid
355	RAJIV LEATHER IMBOSING, 47/46 GAJJUPURWA, JAJMAU	Finished Leather	26°25'56"	80°24'6"	Tannery	PETP/CETP	3.5	Irrigation Canal/Ganga River	Valid	Valid
356	RAMSHA TANNERS(O.N FIROJ KI TANNERY) 160 C , GAJJUPURWA , JAJMAU	Finished Leather	26°25'56"	80°24'6"	Tannery	PETP/CETP	21	Irrigation Canal/Ganga River	Valid	Valid
357	RANA TANNERY , 102 , WAJIDPUR , JAJMAU	Finished Leather	26°25'14"	80°24'60"	Tannery	PETP/CETP	28	Irrigation Canal/Ganga River	Valid	Valid
358	RAZA LEATHER FINISERS , 192/184 , RAMRAI SARAI , JAJMAU	Finished Leather	26°25'56"	80°24'6"	Tannery	PETP/CETP	17.5	Irrigation Canal/Ganga River	Valid	Valid
359	RELIANCE TANNING INDUSTRIES, 487-488, 150 FT. ROAD , JAJMAU	Finished Leather	26°26'18"	80°23'29"	Tannery	PETP/CETP	42	Irrigation Canal/Ganga River	Valid	Valid
360	RIDER TANNING IND. , 242 , GAJJUPURWA , JAJMAU	Finished Leather	26°26'18"	80°23'29"	Tannery*	PETP/CETP	21	Irrigation Canal/Ganga River	Under Considration	Under Considration
361	RIZWAN TANNING IND.104/90 A(22) , SANJAY NAGAR , JAJMAU	Finished Leather	26°25'14"	80°24'60"	Tannery	PETP/CETP	140	Irrigation Canal/Ganga River	Closed	Closed
362	ROSHAN AND COMP., 345/317 (A-1), BHALLA EASTATE JAJMAU	Finished Leather	26°25'56"	80°24'6"	Tannery	PETP/CETP	3.5	Irrigation Canal/Ganga River	Valid	Valid
363	ROSHAN LEATHER IND , 9/10 , GAJJUPURWA , JAJMAU	Finished Leather	26°25'56"	80°24'6"	Tannery	PETP/CETP	21	Irrigation Canal/Ganga River	Valid	Valid
364	ROSHAN TANNERS , 164- 157, LALTUPURWA , JAJMAU	Finished Leather	26°25'56"	80°24'6"	Tannery	PETP/CETP	0	Irrigation Canal/Ganga River	Closed	Closed
365	RUKSH EXIM PVT.LTD. (NEW NAME INDIAN TANNERY) , 50A , 150 FT. ROAD , JAJMAU	Finished Leather	26°25'14"	80°24'60"	Tannery	PETP/CETP	21	Irrigation Canal/Ganga River	Valid	Valid



366	RUSTAM TRADERS , 158/151, LALTUPURWA , JAJMAU	Finished Leather	26°25'56"	80°24'6"	Tannery	PETP/CETP	3.5	Irrigation Canal/Ganga River	Valid	Valid
367	S.A.TANNING IND. , 3 B , 150 FEET ROAD, JAJMAU	Finished Leather	26°25'14"	80°24'60"	Tannery	PETP/CETP	21	Irrigation Canal/Ganga River	Closed	Closed
368	S.K.KAMAL TANNERY , 58/47 (1)NEAR PARK LEATHER ,SHITLA BAZAR , JAJMAU	Finished Leather	26°25'56"	80°24'6"	Tannery	PETP/CETP	0	Irrigation Canal/Ganga River	Closed	Closed
369	S.K.S. Leather Finishers (Benefit Tanning Industry, 175/158B-4, Buiyaghat Jajmau, kanpur	Finished Leather	26°25'48"	80°24'38"	Tannery	PETP/CETP	21	Irrigation Canal/Ganga River	Closed	Closed
370	S.P. TANNERS, 785, TADBAGIA, SANJAY NAGAR, JAJMAU	Finished Leather	26°25'14"	80°24'60"	Tannery	PETP/CETP	21	Irrigation Canal/Ganga River	Valid	Valid
371	S.R.TANNERY ,129 A, BLOCK C, GAJJUPURWA , JAJMAU	Finished Leather	26°26'18"	80°23'29"	Tannery*	PETP/CETP	21	Irrigation Canal/Ganga River	Valid	Valid
372	S.S.TANNERS (AYAZ TANNERS) , 104/90 A (B) WAJIDPUR , JAJMAU	Finished Leather	26°25'14"	80°24'60"	Tannery	PETP/CETP	3.5	Irrigation Canal/Ganga River	Valid	Valid
373	SABA EXPORT , 104/90A(28C) , SANJAY NAGAR , JAJMAU	Finished Leather	26°25'14"	80°24'60"	Tannery	PETP/CETP	21	Irrigation Canal/Ganga River	Valid	Valid
374	SABRA LEATHER FINISERS , 94 E , WAJDIPUR , JAJMAU	Finished Leather	26°25'14"	80°24'60"	Tannery	PETP/CETP	21	Irrigation Canal/Ganga River	Valid	Valid
375	SADDAM TANNERS , 98/93 , GAJJUPURWA , JAJMAU	Finished Leather	26°25'48"	80°24'38"	Tannery	PETP/CETP	21	Irrigation Canal/Ganga River	Closed	Closed
376	SAGUN IND. , 94 A , WAJIDPUR , JAJMAU	Finished Leather	26°25'14"	80°24'60"	Tannery	PETP/CETP	35	Irrigation Canal/Ganga River	Valid	Valid
377	SAHARA TANNING IND. , 104-C-1 , WAJIDPUR , JAJMAU	Finished Leather	26°25'14"	80°24'60"	Tannery	PETP/CETP	21	Irrigation Canal/Ganga River	Valid	Valid

378	SAIRA IND. (AKMAL SONS), 35 A , 150 FT. ROAD , JAJMAU	Finished Leather	26°25'14"	80°24'60"	Tannery	PETP/CETP	21	Irrigation Canal/Ganga River	Valid	Valid
379	SAJID TANNERS , 361,1 D , 30 B/2 , GAJJUPURWA , JAJMAU	Finished Leather	26°26'18"	80°23'29"	Tannery	PETP/CETP	21	Irrigation Canal/Ganga River	Valid	Valid
380	SALIK LEATHER FINISERS , PLOT NO. 53 , 150 FT. ROAD , JAJMAU	Finished Leather	26°25'14"	80°24'60"	Tannery	PETP/CETP	21	Irrigation Canal/Ganga River	Valid	Valid
381	SALLAN ENTERPRISES (Sadab Enterprises)SANJAY NGR. 104 /90 A JAJMAU	Finished Leather	26°25'14"	80°24'60"	Tannery	PETP/CETP	21	Irrigation Canal/Ganga River	Valid	Valid
382	SALLAN ENTERPRISES , 332 / 308 10 B, BHALLA ESTATE JAJMAU	Finished Leather	26°25'56"	80°24'6"	Tannery	PETP/CETP	3.5	Irrigation Canal/Ganga River	Valid	Valid
383	SALU TANNERS , (ISARA TANNERY) 33,34 A, IDGAH ROAD , JAJMAU	Finished Leather	26°26'18"	80°23'29"	Tannery	PETP/CETP	21	Irrigation Canal/Ganga River	Closed	Closed
384	SALWAN TANNERY , 8/5-B, ASARFABAD , JAJMAU	Finished Leather	26°25'56"	80°24'6"	Tannery	PETP/CETP	0	Irrigation Canal/Ganga River	Closed	Closed
385	SAMSER KI TANNERY , SHITAL BAZAR , JAJMAU	Finished Leather	26°25'56"	80°24'6"	Tannery	PETP/CETP	0	Irrigation Canal/Ganga River	Closed	Closed
386	SAMSON EXPORT , 88/74(7) , HIDUSTAN COMPOUND , JAJMAU	Finished Leather	26°25'56"	80°24'6"	Tannery	PETP/CETP	14	Irrigation Canal/Ganga River	Valid	Valid
387	SANNI LEATHER, B-3, 330 /306, BHALLA ESTATE JAJMAU	Finished Leather	26°25'56"	80°24'6"	Tannery	PETP/CETP	3.5	Irrigation Canal/Ganga River	Closed	Closed
388	Sannu Enterprises, B-13, Bhalla Estate, Jajmau, Kanpur	Finished Leather	26°25'56"	80°24'6"	Tannery	PETP/CETP	3.5	Irrigation Canal/Ganga River	Valid	Valid
389	SARA INTERNATIONAL (RAHIM TANNERS) 12 B 02A, 150 FT ROAD , JAJMAU	Finished Leather	26°25'14"	80°24'60"	Tannery	PETP/CETP	35	Irrigation Canal/Ganga River	Under Considration	Under Considration

390	SARFRAJ TANNERS, 382 /353, BAGALIGHAT, JAJMAU	Finished Leather	26°25'56"	80°24'6"	Tannery	PETP/CETP	14	Irrigation Canal/Ganga River	Valid	Valid
391	SARTAJ TANNERS (MMZ Tannery) , 104/90, (A-7H), WAJIDPUR ,150 FEET ROAD, JAJMAU	Finished Leather	26°25'14"	80°24'60"	Tannery	PETP/CETP	21	Irrigation Canal/Ganga River	Valid	Valid
392	SEEMA TANNING IND. PVT. LTD. , 104/90 A(16) ,WAJIDPUR , JAJMAU	Finished Leather	26°25'14"	80°24'60"	Tannery	PETP/CETP	35	Irrigation Canal/Ganga River	Valid	Valid
393	SHAFIQ SPLIT WORK , 104 /90- B, WAZIDPUR JAJMAU	Finished Leather	26°25'14"	80°24'60"	Tannery	PETP/CETP	3.5	Irrigation Canal/Ganga River	Valid	Valid
394	SHAHID TANNERY , 53 , 150 FT. ROAD , JAJMAU	Finished Leather	26°25'14"	80°24'60"	Tannery	PETP/CETP	21	Irrigation Canal/Ganga River	Closed	Closed
395	SHAKOOR TANNERY , 180 , LALTUPURWA , JAJMAU	Finished Leather	26°25'56"	80°24'6"	Tannery	PETP/CETP	14	Irrigation Canal/Ganga River	Valid	Valid
396	SHALIMAR LEATHER INDUSTRIES 74 A 150 JAJMAU	Finished Leather	26°25'14"	80°24'60"	Tannery	PETP/CETP	52.5	Irrigation Canal/Ganga River	Valid	Valid
397	SHALU TANNERS Gajju Purwa, JAJMAU	Finished Leather	26°25'14"	80°24'60"	Tannery	PETP/CETP	0	Irrigation Canal/Ganga River	Closed	Closed
398	SHAMS LEATHER FINISERS, 150 FT. ROAD , JAJMAU	Finished Leather	26°25'14"	80°24'60"	Tannery*	PETP/CETP	35	Irrigation Canal/Ganga River	Under Consideration	Under Consideration
399	SHAQIB LEATHER TRADERS (IMTIAZ TRADERS) 157B GAJJU PURWA JAJMAU	Finished Leather	26°25'56"	80°24'6"	Tannery*	PETP/CETP	3.5	Irrigation Canal/Ganga River	Valid	Valid
400	SHARIQ TANNERS , 786 , MOTINAGAR CHABILEPURWA , JAJMAU	Finished Leather	26°26'18"	80°23'29"	Tannery	PETP/CETP	21	Irrigation Canal/Ganga River	Valid	Valid
401	SHAUKAT KI TANNERY(TRADE HOUSE) , 8/5 B , ASHARFABAD , JAJMAU	Finished Leather	26°25'56"	80°24'6"	Tannery	PETP/CETP	21	Irrigation Canal/Ganga River	Valid	Valid

402	SHINE LEATHER FINISHERS (WELCOME CHAMICAL IND.) 1 D-11, CHABEELEPURAWA JAJMAU	Finished Leather	26°26'18"	80°23'29"	Tannery	PETP/CETP	21	Irrigation Canal/Ganga River	Valid	Valid
403	SHIVAN TANNERY , JAJMAU ROAD , JAJMAU	Finished Leather	26°25'48"	80°24'38"	Tannery	PETP/CETP	105	Irrigation Canal/Ganga River	Valid	Valid
404	SHUBHAN TANNERS , 43/36 A , SHITLA BAZAR , JAJMAU	Finished Leather	26°25'56"	80°24'6"	Tannery*	PETP/CETP	21	Irrigation Canal/Ganga River	Closed	Closed
405	SKIN FINISHERS ( SHAHID TANNERS ) DARGAH SARIF ROAD JAJMAU	Finished Leather	26°25'48"	80°24'38"	Tannery	PETP/CETP	0	Irrigation Canal/Ganga River	Closed	Closed
406	SOAIB LEATHER, 332/308 A, BHALLA ESTATE JAJMAU	Finished Leather	26°25'56"	80°24'6"	Tannery	PETP/CETP	3.5	Irrigation Canal/Ganga River	Valid	Valid
407	SOCIETY LEATHER , 85 A WAZIDPUR JAJMAU	Finished Leather	26°25'14"	80°24'60"	Tannery	PETP/CETP	28	Irrigation Canal/Ganga River	Closed	Closed
408	SOFIA INTERNATIONAL , 87 A WAJIDPUR	Finished Leather	26°25'14"	80°24'60"	Tannery	PETP/CETP	3.5	Irrigation Canal/Ganga River	Valid	Valid
409	STANDARD TANNERY(KHALWA TANNERY)190/173 , DARGH SARIF ROAD , JAJMAU	Finished Leather	26°25'48"	80°24'38"	Tannery	PETP/CETP	14	Irrigation Canal/Ganga River	Closed	Closed
410	STAR I.A. ENTERPRISES (Z.A. LEATHER PROUDCT) , 42/41 , GAJJUPURWA , JAJMAU	Finished Leather	26°25'56"	80°24'6"	Tannery	PETP/CETP	10.5	Irrigation Canal/Ganga River	Under Considration	Under Considration
411	STAR TANNERY , 19 , RAMRAI SARAI , JAJMAU	Finished Leather	26°25'56"	80°24'6"	Tannery*	PETP/CETP	140	Irrigation Canal/Ganga River	Valid	Valid
412	STAR TANNING IND. , 19 B, LALTUPURWA , JAJMAU	Finished Leather	26°25'56"	80°24'6"	Tannery	PETP/CETP	42	Irrigation Canal/Ganga River	Valid	Valid

413	SULEMAN TANNING IND. , 90/76 B(K) IDGAH ROAD , JAJMAU	Finished Leather	26°25'14"	80°24'60"	Tannery	PETP/CETP	21	Irrigation Canal/Ganga River	Closed	Closed
414	SULTAN TANNERS , 230 JAJMAU ROAD , JAJMAU	Finished Leather	26°25'56"	80°24'6"	Tannery*	PETP/CETP	238	Irrigation Canal/Ganga River	Valid	Valid
415	SULTAN TANNING IND. , 150 FT. ROAD , JAJMAU	Finished Leather	26°25'56"	80°24'6"	Tannery	PETP/CETP	0	Irrigation Canal/Ganga River	Closed	Closed
416	SUNIL ENTERPRISES, 330/306, BHALLA ESTATE JAJMAU	Finished Leather	26°25'56"	80°24'6"	Tannery	PETP/CETP	3.5	Irrigation Canal/Ganga River	Valid	Valid
417	SUNRISE LEATHER FINISERS (Rainbow International), 66 IND. AREA , JAJMAU	Finished Leather	26°25'14"	80°24'60"	Tannery	PETP/CETP	21	Irrigation Canal/Ganga River	Valid	Valid
418	SUNRISE TANNERY , 72 A150 FT. ROAD , JAJMAU , KANPUR	Finished Leather	26°25'14"	80°24'60"	Tannery*	PETP/CETP	105	Irrigation Canal/Ganga River	Valid	Valid
419	SUNSHINE INDUSTRY (F.R.LEATHER), 69 A , 150 FT. ROAD , JAJMAU	Finished Leather	26°25'14"	80°24'60"	Tannery	PETP/CETP	21	Irrigation Canal/Ganga River	Valid	Valid
420	SUNSHINE TANNING IND. , 482-83 , WAJIDPUR , JAJMAU	Finished Leather	26°25'14"	80°24'60"	Tannery	PETP/CETP	21	Irrigation Canal/Ganga River	Valid	Valid
421	SUPER LEATHER FINISERS , 406 K-409, SANJAY NAGAR , JAJMAU	Finished Leather	26°25'14"	80°24'60"	Tannery*	PETP/CETP	21	Irrigation Canal/Ganga River	Valid	Valid
422	SUPER STYLE TANNERS PVT.LTD. 79 , WAJIDPUR , JAJMAU	Finished Leather	26°25'14"	80°24'60"	Tannery	PETP/CETP	56	Irrigation Canal/Ganga River	Valid	Valid
423	SUPER TANNERY LTD. , 187/170 , JAJMAU	Finished Leather	26°25'48"	80°24'38"	Tannery	PETP/CETP	532	Irrigation Canal/Ganga River	Valid	Valid
424	SUPER TRADE 12/9 BANWARILAL KA BAGICHA JAJMAU	Finished Leather	26°25'56"	80°24'6"	Tannery	PETP/CETP	3.5	Irrigation Canal/Ganga River	Closed	Closed
425	SUPREME TANNING IND. , 104/90 ,A-7 , 150 FT. ROAD	Finished Leather	26°25'14"	80°24'60"	Tannery*	PETP/CETP	70	Irrigation Canal/Ganga River	Valid	Valid

	, JAJMAU									
426	SWAN TANNING IND, 199,205,207, GAJJPURWA , JAJMAU	Finished Leather	26°25'56"	80°24'6"	Tannery	PETP/CETP	42	Irrigation Canal/Ganga River	Under Considration	Under Considration
427	TAIYABA INTERNATIONAL 1 D 14 A-1 GAJUPURWA JAJMAU	Finished Leather	26°26'18"	80°23'29"	Tannery	PETP/CETP	3.5	Irrigation Canal/Ganga River	Valid	Valid
428	TAJ TRADERS (UNIT-2) , 104/90 A (16)A , SANJAY NAGAR , JAJMAU	Finished Leather	26°25'14"	80°24'60"	Tannery	PETP/CETP	42	Irrigation Canal/Ganga River	Closed	Closed
429	TAJAMMUL KI TANNERY, 173 /157 C BHDHIA GHAT JAJMAU	Finished Leather	26°25'48"	80°24'38"	Tannery	PETP/CETP	14	Irrigation Canal/Ganga River	Under Considration	Under Considration
430	TANNERS CO , 91 A , WAJIDPUR , JAJMAU	Finished Leather	26°25'14"	80°24'60"	Tannery	PETP/CETP	10.5	Irrigation Canal/Ganga River	Valid	Valid
431	TANNERS INDIA , 38 A , 150 FT. ROAD , JAJMAU	Finished Leather	26°25'14"	80°24'60"	Tannery	PETP/CETP	42	Irrigation Canal/Ganga River	Valid	Valid
432	TANNERS POINT, 129 A, BLOCK-C, AHMAD NAGAR , JAJMAU	Finished Leather	26°26'18"	80°23'29"	Tannery	PETP/CETP	21	Irrigation Canal/Ganga River	Closed	Closed
433	TASMIYA LEATHER PVT.LTD. (TALAT LEATHER PVT.LTD). 29 A , 150 FEET ROAD, Jajmau	Finished Leather	26°25'14"	80°24'60"	Tannery	PETP/CETP	21	Irrigation Canal/Ganga River	Valid	Valid
434	TEJ IND. , 35 A , 150 FT. ROAD , JAJMAU	Finished Leather	26°25'14"	80°24'60"	Tannery	PETP/CETP	21	Irrigation Canal/Ganga River	Valid	Valid
435	TOP TANNERS ,406/377-A, ASARFABAD , JAJMAU	Finished Leather	26°25'56"	80°24'6"	Tannery	PETP/CETP	17.5	Irrigation Canal/Ganga River	Valid	Valid
436	TRIVENI TANNERS , 325/302 , JAJMAU ROAD , JAJMAU	Finished Leather	26°25'56"	80°24'6"	Tannery	PETP/CETP	21	Irrigation Canal/Ganga River	Valid	Valid

437	UNION TANNERS ,(Crown International) 104/90 A , SANJAY NAGAR , JAJMAU	Finished Leather	26°25'14"	80°24'60"	Tannery	PETP/CETP	21	Irrigation Canal/Ganga River	Valid	Valid
438	UNIQUE INTERNATIONAL , 980 D , WAJIDPUR , JAJMAU	Finished Leather	26°25'14"	80°24'60"	Tannery	PETP/CETP	42	Irrigation Canal/Ganga River	Valid	Valid
439	UNITED PROVINCES TANNERY CO. LTD. , JAJMAU	Finished Leather	26°25'56"	80°24'6"	Tannery	PETP/CETP	84	Irrigation Canal/Ganga River	Under Considration	Under Considration
440	UNIVERSAL TANNING IND. 407 /377 A JAJMAU	Finished Leather	26°25'56"	80°24'6"	Tannery	PETP/CETP	14	Irrigation Canal/Ganga River	Valid	Valid
441	UPASNA TANNERY, GAJJUPURWA, JAJMAU, KANPUR	Finished Leather	26°25'56"	80°24'6"	Tannery	PETP/CETP	0	Irrigation Canal/Ganga River	Closed	Closed
442	UPPER INDIA PVT.LTD. , 38/32 , JAJMAU	Finished Leather	26°25'56"	80°24'6"	Tannery	PETP/CETP	140	Irrigation Canal/Ganga River	Valid	Valid
443	V.T.I EXPORTS (KHURSHEED TENNARY ) 126/119, MOTI NGR. GAJJU PURWA JAJMAU	Finished Leather	26°25'56"	80°24'6"	Tannery	PETP/CETP	21	Irrigation Canal/Ganga River	Valid	Valid
444	VENUS IND. , JAJMAU ROAD , JAJMAU	Finished Leather	26°25'48"	80°24'38"	Tannery	PETP/CETP	21	Irrigation Canal/Ganga River	Valid	Valid
445	VERTEX LEATHER 13,88/74 HINDUSTAN COMPOUND JAJMAU	Finished Leather	26°25'56"	80°24'6"	Tannery	PETP/CETP	10.5	Irrigation Canal/Ganga River	Valid	Valid
446	WAHID TANNERS , 153-B, 150 FT. ROAD , JAJMAU	Finished Leather	26°26'18"	80°23'29"	Tannery	PETP/CETP	42	Irrigation Canal/Ganga River	Valid	Valid
447	WASIF TANNERY , 150 FT. ROAD , JAJMAU	Finished Leather	26°26'18"	80°23'29"	Tannery	PETP/CETP	105	Irrigation Canal/Ganga River	Valid	Valid
448	WASIM LEATHER, 332/308, BHALLA ESTATE JAJAMAU	Finished Leather	26°25'56"	80°24'6"	Tannery	PETP/CETP	3.5	Irrigation Canal/Ganga River	Valid	Valid
449	WELCOME TANNERY(ARMAN	Finished Leather	26°25'56"	80°24'6"	Tannery	PETP/CETP	21	Irrigation Canal/Ganga River	Valid	Valid

	TANNER) , 77/66,SHITALA BAZAR , JAJMAU									
450	Western Tannery, 18A-1, Wajidpur, Jajmau, Kanpur	Finished Leather	26°25'14"	80°24'60"	Tannery	PETP/CETP	3.5	Irrigation Canal/Ganga River	Valid	Valid
451	YAQUB TANNERS ,112 F, CHABILEPURWA, GAJJUPURWA , JAJMAU	Finished Leather	26°26'18"	80°23'29"	Tannery	PETP/CETP	3.5	Irrigation Canal/Ganga River	Valid	Valid
452	Yaseen Tanners, 150 Feet Road, jajmau, kanpur	Finished Leather	26°25'14"	80°24'60"	Tannery	PETP/CETP	14	Irrigation Canal/Ganga River	Closed	Closed
453	YUSUF ENTERPRISES, 174 , WAJIDPUR , KANPUR	Finished Leather	26°25'48"	80°24'38"	Tannery	PETP/CETP	21	Irrigation Canal/Ganga River	Valid	Valid
454	Z.R. LEATHER FINISHERS, 263 B, WAJIDPUR JAJMAU	Finished Leather	26°25'14"	80°24'60"	Tannery	PETP/CETP	21	Irrigation Canal/Ganga River	Closed	Closed
455	ZAZ IMPEX , 208/800, SHITLA BAZAR , JAJMAU	Finished Leather	26°25'56"	80°24'6"	Tannery	PETP/CETP	42	Irrigation Canal/Ganga River	Valid	Valid
456	ZAZ SONS EXPORT LTD. , 4 B , SHITLA BAZAR , JAJMAU	Finished Leather	26°25'56"	80°24'6"	Tannery	PETP/CETP	42	Irrigation Canal/Ganga River	Closed	Closed
457	ZAZ TANNERY , 150 FT. ROAD , JAJMAU , KANPUR	Finished Leather	26°26'18"	80°23'29"	Tannery	PETP/CETP	140	Irrigation Canal/Ganga River	Under Consideration	Under Consideration
458	ZEBA TANNERS , 180/3 , LALTUPURWA , JAJMAU	Finished Leather	26°25'56"	80°24'6"	Tannery	PETP/CETP	17.5	Irrigation Canal/Ganga River	Valid	Valid
459	ZINAT TANNERS , 183 A , RAMRAI SARAI , JAJMAU	Finished Leather	26°25'56"	80°24'6"	Tannery	PETP/CETP	21	Irrigation Canal/Ganga River	Under Consideration	Under Consideration
460	ZINAT TANNERS 128 /88 RAMRAISARAI JAJMAU	Finished Leather	26°25'56"	80°24'6"	Tannery	PETP/CETP	3.5	Irrigation Canal/Ganga River	Closed	Closed
461	ZURIC INTERNATIONAL,(SHIVLI TANNERY) , 377D-A, IQBAL STREET , JAJMAU	Finished Leather	26°26'18"	80°23'29"	Tannery	PETP/CETP	17.5	Irrigation Canal/Ganga River	Valid	Valid



**2.8 Effluent Disposal Methods- Recipient Water Bodies Etc**

S.No.	Industrial Area	Effluent Disposal Method	Recipient Water Bodies	Remark
1	Panki Industrial Area	Through ICI Drain	Pandu River	Treated Industrial Effluent
2	Vijay Nagar	Through Ganda Nala	Pandu River	Treated Industrial Effluent Mixed with untreated sewage
3	Dada Nagar	Through Ganda Nala	Pandu River	Treated Industrial Effluent Mixed with untreated sewage
4	Fazalganj	Through Ganda Nala	Pandu River	Treated Industrial Effluent Mixed with untreated sewage
5	Jajmau	Through Dabka Drain, Sheetla Bazar Drain, Budhiyaghat Drain, Wazidpur Drain,	Ganga River	Treated Industrial Effluent discharge on land through Irrigation Channel. In case of overflow from pumping station industrial effluent mixed with

				untreated sewage of drains of area.
--	--	--	--	-------------------------------------

## 2.9 Quantification Of Wastewater Pollution Load And Relative Contribution By Different Sources viz Industrial/ Domestic

### a) Industrial:

S.No.	Drain	Type of Industry * The Type of Industry may be changed as per local conditions							Total Effluent Discharge (MLD)	Pollution load (BOD in kg/day)
		Sugar	Pulp & Paper	Distillery	Textile	Slaughter House	Others	Total		
1	Wazidpur	0	0	0	0	0	134	134	2.295	9180 (In case of overflow)
	Budhiyaghat	0	0	0	0	0	25	25	0.378	1512 (In case of overflow)
	Sheetla bazar	0	0	0	0	0	179	179	2.4304	9720 (In case of overflow)
	ICI Drain	0	0	0	30	0	10	40	8.416	353.47
	Ganda nala	0	1	0	22	0	13	36	0.719	51.67
	Halwakhand nala	0	0	0	0	0	0	0	0	
	Panki Thermal power	0	0	0	0	0	01	01	0	

S.No.	Drain	Type of Industry							Total Effluent Discharge (MLD)	Pollution load (BOD in kg/day)
		* The Type of Industry may be changed as per local conditions								
		Sugar	Pulp & Paper	Distillery	Textile	Slaughter House	Others	Total		
							(Closed)			
	COD	0	0	0	0	1 (Closed)	0	01	0	
	Direct to Pandu River	0	1	0	0	0	0	01	ZLD	
	<b>Total</b>	<b>0</b>	<b>2</b>	<b>0</b>	<b>52</b>	<b>01</b>	<b>362</b>	<b>417</b>	<b>14.2384</b>	

**b) Domestic:**

S No.	District	No. of Drains	Type of Drains			Status of Drains			Industries		Sewage Discharge (MLD)			Pollution load (BOD in kg/day)
			Domestic	Industrial	Mixed	Tapped	Untapped	Partially Tapped	Number	Treated Effluent (MLD)	Treated	Untreated	Total	
<b>Drains Meeting at, Pandu River, Kanpur</b>														
1.	ICI Drain	01	-	-	Yes	NO	Yes	-	40	8.416	-	5.8	-	417.6
2.	Ganda nala	01	-	-	Yes	NO	-	Yes	36	7.195	-	46.88	-	8438
3.	Halwakhand nala	01	Yes	-	-	NO	-	Yes	-	-	-	40.99	-	6394
4.	Panki Thermal power	01	-	-	Yes	NO	Yes	-	01	14.300 (Closed)	-	34.70	-	5205
5.	Ratanpur	01	Yes	-	-	NO	Yes	-	-	-	-	6.65	-	798
6.	COD	01	-	-	Yes	Yes	-	-	-	-	-	-	-	-
<b>Drains Meeting at River Ganga in Kanpur</b>														
7.	Air force	01	Yes	-	-	Yes	-	-	-	-	7.87	-	-	566.64
8.	Wazidpur	01	-	-	Yes	Yes	NO	-	134	2.295	-	-	-	-
9.	Budhiyaghat	01	-	-	Yes	Yes	NO	-	25	0.378	-	-	-	-
10.	Sheetla bazar	01	-	-	Yes	Yes	NO	-	179	2.4304	-	11.25	-	3510
11.	Dabka nala	01	Yes	-	-	NO	Yes	-	-	-	-	17.21	-	1961.94
12.	Satti chaura	01	Yes	-	-	Tempor ary Tapped	NO	-	-	-	-	-	-	-
13.	Golaghat nala	01	Yes	-	-	Tempor ary Tapped	NO	-	-	-	-	-	-	-
14.	Guptar ghat nala	01	Yes	-	-	Yes	NO	-	-	-	-	-	-	-

S No.	District	No. of Drains	Type of Drains			Status of Drains			Industries		Sewage Discharge (MLD)			Pollution load (BOD in kg/day)
			Domestic	Industrial	Mixed	Tapped	Untapped	Partially Tapped	Number	Treated Effluent (MLD)	Treated	Untreated	Total	
15.	Muir mill drain	01	Yes	-	-	Yes	NO	-	-	-	-	-	-	-
16.	Parmatghat nala	01	Yes	-	-	Yes	NO	-	-	-	-	-	-	-
17.	Tefco nala	01	Yes	-	-	Yes	NO	-	-	-	-	-	-	-
18.	Sisamau nala	01	-	-	Yes	Yes	NO	-	-	-	-	-	-	-
19.	Ranighat nala	01	Yes	-	-	Temporary Tapped	-	-	-	-	-	-	-	-
20.	Parmiya nala	01	Yes	-	-	1. Parmiyapurwa Nala-Tapped 2. Nawabganj Nala-Temporary Tapped 3. HBTI Nala-Untapped	-	-	-	-	-	12.16	-	1021.44
21.	Police line drain	01	Yes	-	-	Yes	-	-	-	-	Dry	Dry	-	-
22.	Jail drain	01	Yes	-	-	Yes	-	-	-	-	Dry	Dry	-	-

S No.	District	No. of Drains	Type of Drains			Status of Drains			Industries		Sewage Discharge (MLD)			Pollution load (BOD in kg/day)
			Domestic	Industrial	Mixed	Tapped	Untapped	Partially Tapped	Number	Treated Effluent (MLD)	Treated	Untreated	Total	
	<b>Total</b>	<b>22</b>	<b>14</b>	<b>-</b>	<b>8</b>	<b>15</b>	<b>5</b>	<b>3</b>	<b>416</b>	<b>175.64</b>	<b>7.87</b>	<b>175.64</b>	<b>-</b>	<b>28312.62</b>

## 2.10 Action Plan for Compliance and Control of Pollution

### 2.10.1 Short Term Action Points (upto 1 year, including continuous activities)

#### Short Term Action Points (upto 1 year, including continuous activities)

Sr. No.	Action Points	Timeline	Responsible Agencies/ Stake Holders
2.10.	<b>Water Pollution</b>	<b>Frequency</b>	
1		Red category- <b>3 months</b>	
a)	<ul style="list-style-type: none"> <li><b>Industrial Source</b> - Proposed Action Plan for effective control of Water Pollution: Regular effluent sample collection and analysis of Pollution Control System in Red, Orange &amp; Green category Industries to be done to ensure strict compliance of prescribed effluent norms.</li> </ul>	Orange category - <b>6 months</b>	UPPCB Individual Industry
		Green category - <b>12 months</b> (By UPPCB) & By Individual Industries as follows	
	<ul style="list-style-type: none"> <li>Installation of energy meter, on line PH meter, automatic chemical dosing system, on line effluent quality &amp; flow measurement (OCEMS) and installation of independent laboratory to monitor critical parameters like MLSS, SVI etc. and other inlet and outlet parameters of ETP for Large &amp; Medium Industries</li> </ul>	Ongoing	Individual Industries (Large and Medium)
	<ul style="list-style-type: none"> <li>Upgradation of ETP/PETP in existing water polluting units is to be done on case to case basis. Under the upgradation plan, suitable tertiary treatment methods are to be installed in a time bound manner in order to ensure that treated water is recycled / reused to the maximum extend.</li> </ul>	Within 06 months.	Individual Industries.
b)	<ul style="list-style-type: none"> <li><b>Groundwater Pollution:</b> Regular monitoring of Over Head Tanks supplying drinking water in the region and Rainy wells is proposed to be done by Regional Laboratory of State Pollution Control Board. Also, intensive surveys will be done to ensure that practice of reverse boring is not prevalent in the region.</li> </ul>	Ongoing	Jal Nigam/ State Ground Water Authority
c)	<ul style="list-style-type: none"> <li><b>Domestic Waste Water (Sewage):</b> Domestic sewage contributes to about 80% of Water. The status of Sewage Pollution Control is as follows:</li> </ul>	Ongoing	UPPCB and GPCU, UP Jal Nigam

- STPs are Operational  
Ongoing  
UPPCB and GPCU, UP Jal Nigam
- Combined Inspection of STPs by UPPCB and Jal Nigam  
Ongoing Process  
UPPCB and GPCU, UP Jal Nigam
- Upcoming High Rise Buildings, Commercial Project, Educational Institution, Multiplex, Town ship & Building Projects are major source of sewage generation and Municipal Solid Waste. Such projects must ensure setting up of STPs, recirculation of treated water for flushing/gardening regarding purpose & ensure compliance of the conditions of the Environment Clearance and NOC from PCB.  
Ongoing Process  
Project proponent KDA & UPPCB.

**2.10.2 Existing Infrastructure Facilities-** Water quality monitoring network, ETPs, CETPs, sewerage treatment plant of industry (STPs), surface drainage system, effluent conveyance channels/ outfalls etc.

### 2.10.3 Technological Intervention

S. No	Industries	Category	Pollution control measures installed (Y/N)
1	387 Tanneries attached with CETP Jajmau	Red	N
2	11 Textile Units attached with CETP Rooma	Red	Y
3	56 units having individual ETP	Red	Pollution Control Measures installed in 03 Units. Discharge of 32 units is $\leq 10$ KLD & Discharge of 24 units is $\geq 10$ KLD. 07 Units closed ETP not installed.



#### 2.10.4.1 Inventorisation of Prominent Industries with Technological Gaps

S. No.	Industries	Category	Pollution control measures installed (Y/N)
1	Textile	Red	ETP Installed upgradation of the ETP according to the charter is in process.
2	Tanneries	Red	PETP Installed upgradation of the PETP according to the direction is to be done.

#### 2.10.4.2 Identification of Low Cost and Advanced Cleaner Technology for Pollution Control

S. No	Number of industries adopted cleaner technologies	Previous technologies	New technologies
1	387 Tanneries	Traditional Salt separation (manual) from hides. PETP for pH & solid control. CRP/CCRP for chrome recovery and reuse.	<p>cleaner technologies as per the order of Hon'ble NGT in O.A. No. 200/2014.</p> <p>The tannery industries should be encouraged to adopt the methodology for processing of hides as per the Central Leather Research Institute, Chennai. The pinpoints are as follows:</p> <ul style="list-style-type: none"> <li>• Alternative methods of preservation of hides/skins and processing of green hides.</li> <li>• Desalting of hides and skins and collection of salt for disposal or reuse.</li> <li>• Use of enzymes in soaking process.</li> <li>• Soaking in drums instead of pits</li> <li>• Green fleshing of hides.</li> <li>• Cleaner liming options.</li> <li>• Ammonia-free deliming process.</li> <li>• Alternative pickling &amp; chrome tanning process.</li> <li>• High exhaust tanning process.</li> <li>• Pickle less Chrome tanning process</li> <li>• Pickle-Basification Free Chrome Tanning.</li> <li>• Salt Free Chrome Tanning.</li> <li>• Direct Chrome Liquor Recycling (DCLR).</li> <li>• Chrome Recovery and Reuse.</li> <li>• Cleaner technologies in post tanning and finishing.</li> </ul>
2	Textile	Physicochemical based ETP.	Upgradation of ETP as per the charter prepared by CPCB for textile units.
2	01 CETP	UASB technology	Upgradation of CETP in compliance of Hon'ble NGT Order in O.A. No. 200/2014. ASP technology

based CETP. Pre based followed by Ultra Filtration and post  
& post dilution dilution with sewage.  
with sewage.

## **2.10.5 Infrastructure Renewal if any required**

### **2.10.5.1 Details of existing infrastructure facilities-**

- MSW Treatment & Disposal Facility Capacity 1447 TPD
- STP Bingawan Capacity 210 MLD
- STP Sajari Capacity 42 MLD
- STP Jajmau Capacity 43 MLD
- STP Jajmau Capacity 05 MLD
- STP Jajmau Capacity 130 MLD
- CETP Jajmau Capacity 36 MLD (09 MLD Tannery Waste Water & 27 MLD Sewage)
- CETP Rooma Capacity 1.5 MLD (For Textile Units)

### **2.10.5.2 Need of up gradation of existing facilities -**

- MSW Treatment & Disposal Facility Capacity 1447 TPD:- Regular operation with dizeded capacity along with peripheral activites i.e. collction, segregation, transportation etc.
- STP Bingawan Capacity 210 MLD:- Proper operation to comply the prescribed norms.
- STP Sajari Capacity 42 MLD:- Proper operation to comply the prescribed norms.
- STP Jajmau Capacity 43 MLD:- Proper operation to comply the prescribed norms.
- STP Jajmau Capacity 05 MLD:- Proper operation to comply the prescribed norms.
- STP Jajmau Capacity 130 MLD:- Proper operation to comply the prescribed norms.
- CETP Jajmau Capacity 36 MLD (09 MLD Tannery Waste Water & 27 MLD Sewage):- In compliance of Hon'ble NGT Order dated 13.07.2017 Upgradation of the CETP is in progress in supervision of NMCG.
- CETP Rooma Capacity 1.5 MLD (For Textile Units):- Proper operation to comply the prescribed norms.

### **2.10.5.3 De-silting of water tanks, drains, culvert, etc. - Please provide details**

### **2.10.5.4 Construction of lined drains/ connections - Please provide details if any**

### **2.10.5.5 Treatment and management of contaminated surface water bodies - Please provide details:**

<b>S. No.</b>	<b>Contaminated surface water bodies</b>	<b>Treatment adopted</b>	<b>status</b>
<b>1</b>			

**2.10.5.6 Rejuvenation/ Management Plan for important eco-geological features-**  
Please provide details if any

**2.10.5.7 Comments on Carrying of effluent from industrial units located in non-industrial locations to CETP facilities by lined drains/ pipelines only and prevention of other disposal into city sewerage/ surface drainage**

**2.10.5.8 Installation of Gen sets at CETPs -** Please provide details if any requirement

#### **2.10.6 Managerial and Financial aspects**

**2.10.6.1 Cost and time estimates:** Details of cost estimated for any infrastructure renewal related works, if any.

**2.10.6.2 Identified private/ public sector potential investors and contribution/ obligation:** If any, investment from private sector potential investors please provide details.

#### **2.10.6.3 Government Budgetary support requirement**

<b>S. No.</b>	<b>Amount of budget allocated to CEPI area</b>	<b>Remarks</b>
1		
2		

#### **2.10.6.4 Hierarchical and structured managerial system for efficient implementation**

**2.10.7 Self monitoring systems industries (ETPs) etc.-** Please provide details

<b>S. No.</b>	<b>Industries</b>	<b>Category</b>	<b>ETPs installed(Y/N)</b>
1			

**2.10.8 Data linkages to SPCB / CPCB (OCEEMS)-** Please provide details

<b>S. No.</b>	<b>Industries</b>	<b>Category</b>	<b>Data linkages (Y/N)</b>
1			

## 2.11 MONITORING: SURFACE WATER, GROUND WATER

### SURFACE WATER MONITORING STATIONS

(Insert a location map showing surface water monitoring stations in the city-  
Sample map has been attached below and provide other details as well)



#	Location/Station	Location Code	#	Location/Station	Location Code
1	Bithoor	SW1	3	Shekhpur	SW3
2	Ganga Barrage	SW2			

### GROUND WATER MONITORING STATIONS:

(Insert a location map showing ground water monitoring stations in the city-  
Sample map has been attached below and provide other details as well)



#	Location/Station	Location Code	#	Location/Station	Location Code
1		GW1	3		GW3
2		GW2	4		GW4

### 3.0 Air Environment

**3.1 Present status of Air environment:** supported with minimum one-year analytical data i.e. status of AQI for last 1 year.

S. No.	Cluster	Months(Jan 2019- Dec-2019)	AQI	Condition
--------	---------	-------------------------------	-----	-----------

**3.1.1 Critical locations for air quality monitoring:** Identification of critical locations for air quality monitoring

S. No.	Locations identified	Coordinates		Distance and direction
		Latitude	Longitude	

**3.1.2 Present levels of pollutants in air:** Reports of routine parameters, special parameters and air toxic relevant to the area in three categories- known carcinogens probable carcinogen and other toxic

a) Ambient Air Quality Monitoring for following parameters:

i) SO<sub>2</sub>, NO<sub>2</sub>, PM<sub>10</sub>, PM<sub>2.5</sub>, Pb and other relevant parameter (for 24 hourly average monitoring values)

S. No	Sampling Location	Month & Year	Parameters	Observed values	Standards
1	Kidwai Nagar	Jan-2020	SO <sub>2</sub> ,	9.15,	80,
			NO <sub>2</sub> ,	56.49,	80,
			PM <sub>10</sub>	257.66	100
2	Jareeb Chowki	Jan-2020	SO <sub>2</sub> ,	9.01,	80,
			NO <sub>2</sub> ,	58.80,	80,
			PM <sub>10</sub>	255.23	100
3	Panki Site-1	Jan-2020	SO <sub>2</sub> ,	9.40,	80,
			NO <sub>2</sub> ,	63.24,	80,
			PM <sub>10</sub>	320.50	100

4	Shastri Nagar	Jan-2020	SO <sub>2</sub> ,	8.91,	80,
			NO <sub>2</sub> ,	55.16,	80,
			PM <sub>10</sub>	237.85	100
5	Awas Vikas, Kalyanpur	Jan-2020	SO <sub>2</sub> ,	8.21,	80,
			NO <sub>2</sub> ,	47.23,	80,
			PM <sub>10</sub>	219.18	100

ii) O<sub>3</sub>, CO and other relevant parameter (for 1 hrly average and 8 hrly average )

S. No	Parameters	Observed values	Standards
-------	------------	-----------------	-----------

iii) Benzene, Arsenic & Nickel and other relevant parameter (for 24 hrly average value)

S. No	Parameters	Observed values	Standards
-------	------------	-----------------	-----------

### 3.1.3 Predominant sources contributing to various pollutants

S. No	Sources	Percent contribution	Main Pollutants
-------	---------	----------------------	-----------------

**3.2 Sources of air pollution:** viz industrial, domestic (coal an biomass burning), natural and transport and heavy earth movers

### 3.3 Air Polluting Industries in the area/ cluster

S. No	Number of Air Polluting industries	Coordinates	Distance and direction
-------	------------------------------------	-------------	------------------------

1		Latitude	Longitude
---	--	----------	-----------

### 3.4 Impact of activities of nearby area as the CEPI Area

Land use distribution(%) of nearby areas of CEPI and map

### 3.5 Quantification of the air pollution load and relative contribution by different sources (If done from reputed institution)

S. No.	Air Pollution Sources	Category	Pollution Load	Percentage
1				
2				

### 1.6 Action plan for compliance and control of pollution

Short Term Action Points (upto 1 year, including continuous activities)

Sr. No.	Action Points	Timeline	Responsible Agencies/ Stake Holders
3.6	<ul style="list-style-type: none"> <li><b>Air Pollution Industrial:</b> Detailed Inventory of total air polluting industries in the region.</li> </ul>	Stack Monitoring of	
a)	<ul style="list-style-type: none"> <li><b>Proposed Action Plan for effective control of Air Pollution:</b> Regular Monitoring of Air Pollution Control System with a use of (OCEMS) in large and medium Industries in order to ensure strict compliance of prescribed Norms.</li> </ul>	Large & Medium units every 06 months and once in a Year for SSI units. (By UPPCB & by individual Industries)	UPPCB & Individual Industries.

Long Term Action Points (more than 1 year)

Sr. No.	Action Points	Timeline	Responsible Agencies/ Stake Holders
b)	<ul style="list-style-type: none"> <li><b>Air Pollution/ Industrial Pollution:</b> Implementation of Cleaner Technology in order to reduce quantity of process and fugitive emissions and effective Operation &amp; maintenance of installed APCS.</li> </ul>		



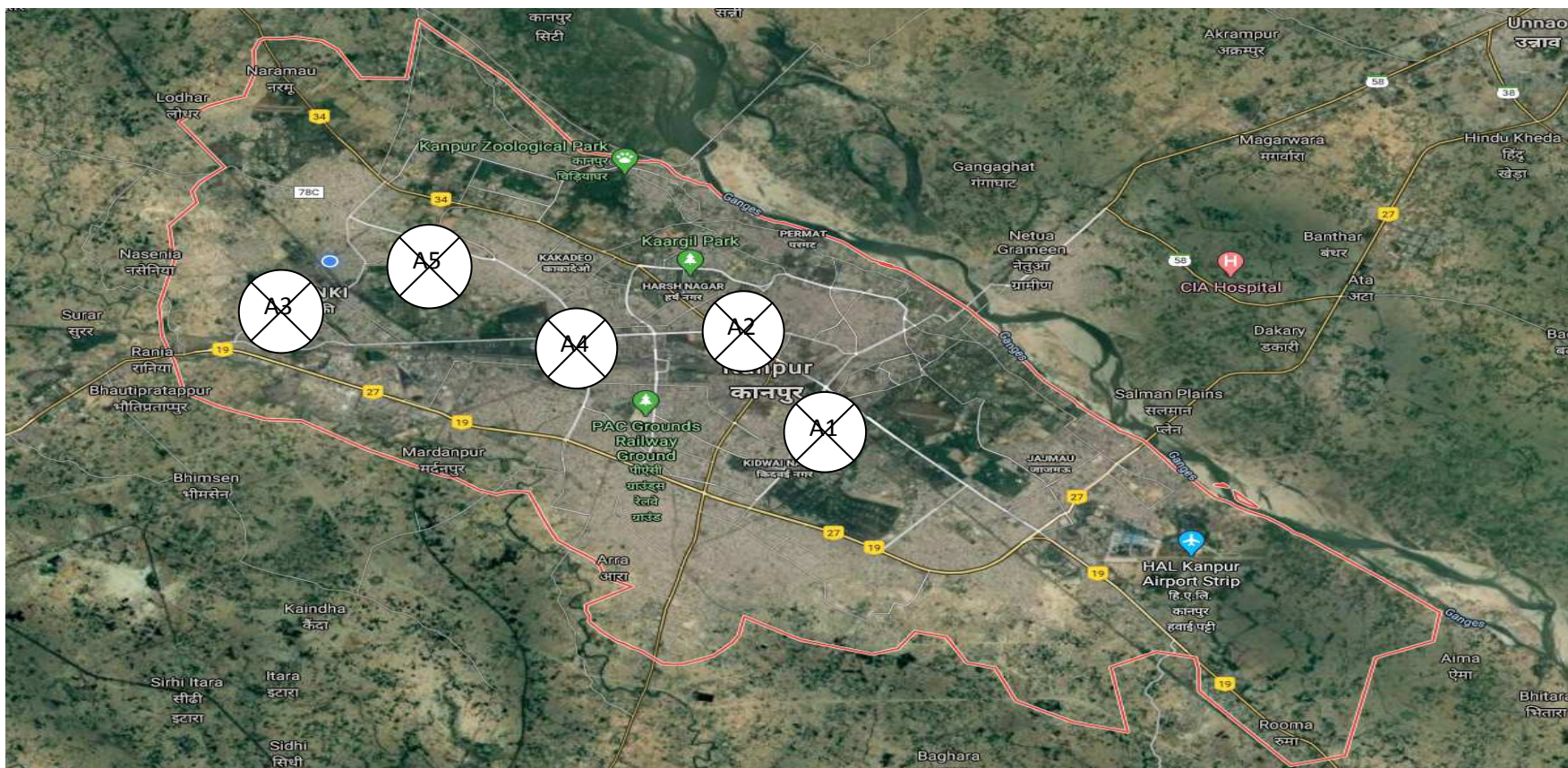
	<p>Implementation of cleaner technology / adoption of cleaner fuel, identification of industries to be done in time bound manner. Switching over to cleaner fuel has been proposed as the best option to control Air Pollution in Industrial Areas. Some Industries have already switched to cleaner fuel technology. Technological intervention / switching over to cleaner fuel to be done in time bound manner. To supply and promote the use of cleaner fuel like CNG/PNG, in order to reduce emissions in the industrial</p>	1 Year	UPPCB/ Individual Industry/ IGL
c)	<ul style="list-style-type: none"> <li>● <b>Introduction of Cleaner Fuel for Industrial Uses:</b> Currently industries are using Coal/Wood/LDO/LSHS as a fuel which emits SPM and SO<sub>2</sub> and other Pollutants. If cleaner fuel such as CNG/PNG is made available to industries the RSPM, SO<sub>2</sub> will be reduced and Ambient Air Quality will be improved. Board has given NOC to IGL for vehicles as well as industrial &amp; domestic use. These companies need to expedite there distribution network for the same</li> </ul>	<p>Gas &amp; Oil Companies are in process of getting more and more industries on board and complete switch over from solid fuel to clean fuel will be done in a time bound Manner.</p>	Gas and Oil Companies
d)	<ul style="list-style-type: none"> <li>● <b>Clean fuel for vehicles:</b> Sufficient number of CNG stations should be provided to ensure continious and enough supply of clean fuel.</li> </ul>	<p>01 year / As per plan submitted by Gas Agencies.</p>	RTO & Gas Companies
e)	<ul style="list-style-type: none"> <li>● <b>Installation of Ambient Air Quality Monitoring Stations:</b> At present manual AAQM Stations are operational but they need to be upgraded to monitor RSPM and PM<sub>2.5</sub> as per new AAQM Standard and also other parameters listed in new AAQM continuous AAQM Stations need to be set up Ambient Air Quality in critical Industrial Zones to be monitored manually once in every 02 months on 24 hours basis by UPPCB.</li> </ul>	1 Year	UPPCB and CPCB
f)	<ul style="list-style-type: none"> <li>● <b>Display of AAQMS data:</b> On line display of AAQMS data at two different locations in the area need to be under taken by Industries Association and UPPCB</li> </ul>	1.5 Years	Industries /UPPCB &

CPCB

- |    |  |         |   |
|----|--|---------|---|
| g) | <ul style="list-style-type: none"><li>● <b>Use of Cleaner fuel:</b> Time frame to be chalked out by RTO for conversion of all Commercial vehicles such as Auto, Bus &amp; Auto into CNG.</li></ul> | 01 Year | Transport Department in consultation with Oil & Gas Companies |
| h) | <ul style="list-style-type: none"><li>● <b>Development of Green Belt:</b> Should develop Green belt from 20% to 40% of the total area.</li></ul>   | Ongoing | Dept. of Industries /Forest Dept. & Concerned Industries      |

**3.6.1 Existing infrastructure facilities- Ambient Air Quality Monitoring Network**

Number of manual AQ monitoring station	Number of CAAQMS	Total Monitoring station
5	1	6



#	Location/Station	Location Code	#	Location/Station	Location Code
1	Kidwai Nagar	A1	3	Panki Site-1	A3
2	Jareeb Chowki	A2	4	Shastri Nagar	A4
5	Awass Vikas Kalyanpur	A5			

### 3.6.2 Pollution control measure installed by the individual sources of pollution

S. No.	Pollution Sources	Category	APCS installed(Y/N)
--------	-------------------	----------	---------------------

1

### 3.6.3 Technological intervention

3.6.3.1 Inventorization of prominent industries with technological gap

S. No.	Industries	Category	APCS installed(Y/N)
--------	------------	----------	---------------------

1

3.6.3.2 Identification of low cost and advanced cleaner technology for air pollution control:

3.6.3.3 Introduction and switch over to cleaner fuel

S. No.	Number of industries adopted cleaner fuel technologies	Previous fuel	New fuel
--------	--	---------------	----------

1

### 3.6.4 Need of infrastructure renovation

3.6.4.1 Development of roads: Identification of damaged roads which needs repairment and maintenance:

S. No.	Identified damaged roads	Length	Remarks
--------	--------------------------	--------	---------

1

### 3.6.5 Impact on CEPI score after installation/ commissioning of fully fledged air pollution control systems

S. No.	CEPI score before APCS	CEPI score before APCS	Percent improvement
--------	------------------------	------------------------	---------------------

1

### 3.6.6 Managerial and financial aspects- cost and time estimates

3.6.6.1 Cost and time estimates: Details of cost estimated for any infrastructure renewal related works, if any.

3.6.6.2 Identified private/ sector potential investors and their contribution/ obligations: If any, investment from private sector potential investors please provides details.

3.6.6.3 Government budgetary support requirement

S. No.	Amount of budget allocated to CEPI area	Remarks
--------	---	---------

1

3.6.6.4 Hierarchical and structured managerial system for efficient implementation

### 3.6.7 Self monitoring system in industries (stacks, APCDs)

S. No.	Industries	Category	APCS/APCDs installed(Y/N)
1			

### 3.6.8 Data linkages to SPCB/ CPCB (OCEMS)

S. No.	Industries	Category	Data linkage (Y/N)
1			

### 3.6.9 AAQM Status of Districts

S. No.	NAME AND ADDRESS OF THE INDUSTRY	PHONE NUMBER	NUMBER OF AAQM INSTALLED	PARAMETERS MONITORED
1				PM <sub>10</sub> , SO <sub>2</sub> , NO <sub>x</sub> & CO
				PM <sub>2.5</sub> , PM <sub>10</sub> , SO <sub>2</sub> , NO <sub>x</sub> , CO, Ammonia, Benzene, Ozone
2				PM <sub>2.5</sub> , PM <sub>10</sub> , SO <sub>2</sub> , NO <sub>x</sub> , CO, Ammonia, Benzene, Ozone
3				PM <sub>2.5</sub> , PM <sub>10</sub> , SO <sub>2</sub> , NO <sub>x</sub> , CO, Ammonia, Benzene, Ozone
4				PM <sub>2.5</sub> , PM <sub>10</sub> , SO <sub>2</sub> , NO <sub>x</sub> , CO, Ammonia, Benzene, Ozone, Toluene, Xylene, Humidity, Rain gauge, Temperature, Solar Radiation, Wind Speed and Direction

#### 4. Land Environment (Soil and ground water)

##### 4.1 Soil contamination

4.1.1 Present status of land environment supported with minimum one-year data:

S. No.	Cluster	Months(2019)	Present status	Condition
1				
2				

4.1.2 Critical locations for land/soil pollution assessment and ground water monitoring

S. No.	Locations identified	Coordinates		Distance and direction
		Latitude	Longitude	
1				

4.1.3 Present levels of pollutants in land / soil and ground water (routine parameters, special parameters and water toxics relevant to the area in three categories- non carcinogens, probable carcinogens and other toxics)

S. No.	Parameters	Observed values	Standards
1			
2			

4.1.4 Pre dominant sources contributing to or posing danger of pollution of land and ground water such as hazardous/ toxic waste or chemical dumps/ storage etc.

S. No.	Sources	Percent contribution	Main Pollutants
1			
2			

4.1.5 Sources of soil contamination

S. No.	Sources	Coordinates		Distance and direction
		Latitude	Longitude	
1				

4.1.6. Types of existing pollution: Please provide details

4.1.7. Remedies for abatement, treatment and restoration of normal soil quality: Please provide details and treatment methods adopted

## 4.2 Ground water contamination

### 4.2.1. Present status /quality of ground water

S. No.	Cluster	Months(2019)	Present status	Condition
--------	---------	--------------	----------------	-----------

1

2

### 4.2.2. Source identification (Existing sources of Ground water pollution)

S. No.	Sources identified	Coordinates	Distance and direction
--------	--------------------	-------------	------------------------

1		Latitude	Longitude
---	--	----------	-----------

2

### 4.2.3. Ground water quality monitoring program

S. No.	Sampling Locations	Coordinates	Frequency	Parameters tested
--------	--------------------	-------------	-----------	-------------------

1

2

### 4.2.4. Action plan for control of pollution including cost/ time aspects

Short Term Action Points (up to 1 year, including continuous activities)

Sr. No.	Action Points	Timeline	Responsible Agencies/ Stake Holders
4.2.4	<b>Land Pollution</b>	To send waste	Individual Industry
a)	Proper Storage & Disposal of Hazardous Waste & Solid Waste.	every 03/04 months	

Long Term Action Points (more than 1 year)

Sr. No.	Action Points	Timeline	Responsible Agencies/ Stake Holders
4.2.4	<b>Land Pollution</b>		
b)	<b>Soil Testing</b>		
	<p>Soil testing of some large scale industry has been done and is being carried out every month. Soil testing for different metals like Pb, Cr, Cu, Fe etc. twice a year</p> <p>through recognize laboratory.</p>	01 Year	UPPCB



**4.2.5. Treatment and management of contaminated ground water bodies etc:** Please provide details

**4.2.6. Impact on CEPI Score after abatement of pollution:**

S. No.	CEPI score before	CEPI score after	Percent improvement
--------	-------------------	------------------	---------------------

**4.3 Solid Waste Generation and Management:**

**4.3.1. Waste Classification and Quantification**

S. No.	Source	Category	Quantity
--------	--------	----------	----------

**4.3.1.1. Hazardous Waste**

S. No.	Source	Quantity
--------	--------	----------

**4.3.1.2 Bio-Medical Waste**

S. No.	No. of CBWTF	Quantity	Authorization
--------	--------------	----------	---------------

**4.3.1.3 Electronic Waste**

S. No.	No. of Electronic waste treatment facility	Quantity	Authorization
--------	--	----------	---------------

**4.3.1.4 Municipal Solid Waste/ Domestic Waste/ Sludge Fro STPs/ETPs/CETPs and Other Industrial Sources**

S. No.	Type of Pollution Sources	% OF Waste Generated
--------	---------------------------	----------------------

#### 4.3.1.5 Plastic Waste

Sr. No.	No. of Plastic waste Processing facility	Quantity	Authorization	Compliance status
---------	--	----------	---------------	-------------------

#### 4.3.1.6 Construction and Demolition Waste

S. No.	No. of C&D waste Processing facility	Quantity	Authorization	Compliance status
--------	--------------------------------------	----------	---------------	-------------------

#### 4.3.1.7 Quantification Of Waste And Relative Contribution From Different Source

S. No.	Pollution source	Type of Wastes	Relative Contribution
--------	------------------	----------------	-----------------------

**4.3.2. Identification of Waste Minimization and Waste Exchange Options:** Please provide details if any

**4.3.3. Reduction/Reuse/ Recovery/ Recycle Options in the Co-Processing of Waste:** Please provide details of co-processing options of waste

**4.3.4. Infrastructure Facilities:**

**4.3.4.1. Existing TSDF/Incineration Facilities Including Capacities**

Sr. No.	TSDF/Incineration Facilities	Capacity	Location
---------	------------------------------	----------	----------

**4.3.4.2. Present Status / Performance and Need up Gradation Of Existing Facilities Including Enhancement Of Capacities:** Please provide details:

1. **Treatment And Management Of Contaminated Waste Disposal Sites Etc:**  
Please provide details
2. **Impact On CEPI Score After Proper Management Of Solid Waste**

Sr. No.	CEPI Score before management of solid waste	CEPI Score after management of solid waste	% Change
---------	---	--	----------

**5. PPP Model**

5.1 Identification of projects proposals (for both the options i.e technology intervention and infrastructure renewal) for implementation under the PPP mode under the Action Plan.

Please provide details of any PPP model based Action Plan taken into consideration for technology intervention and infrastructure renewal, if any.

a. Identification of Stockholders/agencies to be involved and to evolve financial managerial mechanism for implementation of PPP projects.

Please provide details Stockholders/agencies involved in financial managerial mechanism for implementation of PPP projects, if any.

**6. Other infrastructural Renewal measures:**

**6.1. Green belts**

S. Nos.	Green Belt Developed/ upcoming Green belts	Area	Features
1			

**6.2. Development of Industrial Estate(s)**

S. No.	Development of Industrial Estates	Area	Features
1			

**6.3. Development / shifting of industries** located in the non industrial areas to the existing/new industrial estates.

S. No.	Shifting of non-Industrial areas to Industrial Estates	Area	Features
1			

## 7. Specific Schemes:

### 7.1. GIS-GPS System for pollution sources monitoring

Please provide details GIS-GPS System for pollution sources, if any.

S. No.	GIS-GPS System enabled Pollution sources	Remarks
1		

### 7.2. Hydro- geological fracturing for water bodies rejuvenation

Please provide details of Hydro- geological fracturing for water bodies rejuvenation, if any.

### 7.3. In-situ remediation of sewage

S. No.	Pollution sources with in-situ remediation facility	Treatment method	Discharge
1			

### 7.4. Utilization of MSW inert by gas based brick kilns

S. No.	Number of Brick kilns	Fuel
1		

### 7.5. Co- processing of wastes in cements industries

S. No.	Cement industries	Fuel
1		

### 8. Public awareness and training programs

Please provide details of Public awareness and training programs held and organized within the CEPI areas and their impact.

### 9. Overall impact on installation/commissioning of pollution control equipment/ measures on the CEPI score

S. No.	CEPI score before installation/commissioning of pollution control equipment/ measures	CEPI score after installation/commissioning of pollution control equipment/ measures	Percent change (%)
1			

### 10. Assessment of techno-economic visibility pollution control system in clusters of small/medium scale industries

Please provide detailed assessment report.

### 11. Efforts shall be made to encourage use of Bio-compost and Bio-fertilizers along with the chemical fertilizers in the state to minimize the unutilized chemical fertilizers runoff into the natural water resources from agriculture fields (through Govt. Policy)

Please ensure the implementation of above mentioned point

### 12. Summary of proposed action points

#### 12.1 Short Term Action Point (Upto one year, including continuous activities)

Sr. No.	Action Points	Timeline	Responsible Agencies/ Stake Holders
12.1	<b>Water Pollution</b>		
a)	<ul style="list-style-type: none"> <li>Industrial Source - Proposed Action</li> </ul>	<u>Frequency</u>	

	Plan for effective control of Water Pollution: Regular effluent sample collection and analysis of Pollution Control System in Red, Orange & Green category Industries to be done to ensure strict compliance of prescribed Norms.	Red category- <b>3 months</b> Orange category - <b>6 months</b> Green category - <b>12 months</b> (By UPPCB) & By Individual Industries	UPPCB Individual Industry
b)	<ul style="list-style-type: none"> <li>Installation of energy meter, on line PH meter, automatic chemical dosing system, online continuous effluent and emission monitoring system (OCEEMS) and establishment of independent laboratory to monitor critical parameters like MLSS, SVI etc. and other inlet and outlet parameters of ETP for Large &amp; Medium Industries</li> </ul>	Ongoing	Individual Industries (Large and Medium)
c)	<ul style="list-style-type: none"> <li>Upgradation of ETP in existing water polluting units is to be done on case to case basis. Under the upgradation plan, suitable tertiary treatment methods are to be installed in a time bound manner in order to ensure that treated water is recycled / reused to the maximum extent.</li> </ul>	Within 06 months.	Individual Industries.
d)	<ul style="list-style-type: none"> <li><b>Groundwater Pollution:</b> Regular monitoring of Over Head Tanks supplying drinking water in the region and Rainy wells is proposed to be done by Regional Laboratory of State Pollution Control Board. Also, intensive surveys will be done to ensure that practice of reverse boring is not prevalent in the region.</li> </ul>	Ongoing	Jal Nigam/ State Ground Water Authority
f)	<ul style="list-style-type: none"> <li><b>Domestic Waste Water (Sewage):</b> Effective operation &amp; maintenance of installed STP. Joint Inspection of STPs by ULBs/ UPPCB/ Jal Nigam Setting up of STPs in upcoming high rise buildings, commercial project, educational institution, multi plexes, town ship &amp; building projects Reuse of treated sewage. Upgradation of STPs to meet revised norms.</li> </ul>	Ongoing Process	ULBs/ UPPCB & Jal Nigam
g)	<ul style="list-style-type: none"> <li><b>Inventorization of Air Polluting Industries:</b></li> </ul>	Stack Monitoring of Large & Medium units every 06 months and	UPPCB & Individual Industries.

h)	<ul style="list-style-type: none"> <li>• <b>Proposed Action Plan for effective control of Air Pollution:</b> Regular Monitoring of Pollution Control System in Industries.</li> </ul>	once in a Year for SSI units. (By UPPCB & by individual Industries)	UPPCB & Individual Industries.
i)	<ul style="list-style-type: none"> <li>• <b>Illegal setup of Industrial activities:</b> Regular drives are to be carried out by Pollution control board and District Administration to identify and seal illegally operating industrial activities.</li> </ul>	Combined drives every 2 months by UPPCB & District Administration.	UPPCB and District Admn.
j)	<ul style="list-style-type: none"> <li>• <b>UPPCL to ensure:</b> that electric connection is not sanctioned in favor of such industries which are not in conforming area.</li> </ul>	Within 01 month	UPPCL and Udyog Bandhu
k)	<ul style="list-style-type: none"> <li>• <b>Monitoring of D.G Sets:</b> Inventorization of Old D.G. Sets in Industrial clusters and Commercial set ups including Multiplexes / Shopping Malls/ Educational Institution within or near industrial areas to be done by UPPCB.</li> </ul>	06 Months.	
	<ul style="list-style-type: none"> <li>I. Post inventorization remedial action with respect to air and noise pollution from likely sources shall be taken against defaulters.</li> </ul>	Ongoing	UPPCB
	<ul style="list-style-type: none"> <li>II. Installation of Acoustic Enclosure with adequate stack height in Old D G Sets to be ensured.</li> </ul>	9 months	
l)	<ul style="list-style-type: none"> <li>• <b>Noise Monitoring:</b> Board is procuring real time noise monitoring system. This will be installed in Commercial, Residential, Industrial and Sensitive Zones of the Region.</li> </ul>	Ongoing	UPPCB
m)	<ul style="list-style-type: none"> <li>• <b>Land Pollution:</b> Proper Storage &amp; Disposal of Hazardous Waste &amp; Solid Waste:</li> </ul>	To send waste every 03/04 months to TSDF	Individual Industry/ UPPCB
n)	<ul style="list-style-type: none"> <li>• <b>Bio-Medical Waste Disposal:</b> member of authorized Common BMW Treatment Facilities Regular Inspection and monitoring of Hospitals / Nursing Homes has to be done</li> </ul>	Inspection of Big Hospitals Every 03 months & Small Hospitals every 06 Months by UPPCB.	Regional Office, UPPCB

## 12.2 Long Term Action Points (More than 1 year)

Sr. No.	Action Points	Timeline	Responsible Agencies/ Stake Holders
12.2 o)	<ul style="list-style-type: none"> <li>• <b>Water Pollution Industrial Pollution:</b> Adoption of Cleaner Technology to reduce</li> </ul>		

	<p>quantity of waste water, Promote recycle after treatment for sector like Paper, Tannery. Strategies regarding cleaner technologies in Paper industries are to be conducted in a time bound manner. In the Waste Paper based units, stress is being laid for setting up of tertiary treatment facilities in order to ensure maximum recycling of treated waste water. Also recycling of the process water is being done as part of cleaner technologies.</p>	<p>Within 01 Years. (By Industries)</p>	<p>Individual Industries UPPCB &amp; Individual Industries</p>
p)	<ul style="list-style-type: none"> <li>Widening and Covering of major open Nalas carrying domestic sewage.</li> </ul>	<p>Ongoing</p>	<p>ULBs/UPSIDA</p>
q)	<ul style="list-style-type: none"> <li><b>Groundwater Pollution:</b> Ground water study may be carried out in all Industrial Clusters by Out Sourcing Agencies.</li> </ul>	<p>1 Year.</p>	<p>UPPCB &amp; Designated Agencies.</p>
r)	<ul style="list-style-type: none"> <li><b>Air Pollution/Industrial Pollution:</b> Implementation of Cleaner technology in order to reduce quantity of process and fugitive emissions and effective Operation &amp; maintenance of installed APCS. Implementation of cleaner technology / adoption of cleaner fuel, identification of industries to be done in time bound manner. Switching over to cleaner fuel has been proposed as the best option to control Air Pollution in Industrial Areas. Some Industries have already switched to cleaner fuel technology. Technological intervention / switching over to cleaner fuel to be done in time bound manner. To supply and promote the use of cleaner fuel like CNG, in order to reduce emissions in the industrial</li> </ul>	<p>1 Year</p>	<p>UPPCB and Individual industry</p>
s)	<ul style="list-style-type: none"> <li><b>Introduction of Cleaner Fuel for Industrial Uses :</b> Currently industries are using Coal/ Wood and LDO/LSHS as a fuel which emits SPM and SO2 and other pollutants. If CNG is made available to industries the RSPM, SO2 will be reduced and Ambient Air Quality will be improved. Board has given NOC to IGL &amp; Adani Group to provide CNG in Noida for vehicles as well as industrial &amp; domestic use. These companies need to expedite there distribution network for</li> </ul>	<p>Gas &amp; Oil Companies are in process of getting more and more industries on board and complete switch from solid fuel to clean fuel will be done in a time bound manner.</p>	<p>Gas and Oil Companies</p>



t)	<p>the same at the earliest.</p> <ul style="list-style-type: none"> <li>• <b>Clean fuel for vehicles:</b> At present 16 CNG stations have been building to supply clean fuel. These stations have Compression capacity. Also, all commercial three wheelers buses being registered using CNG only. Phasing out of old diesel commercial vehicles is being done as per policy.</li> </ul>	01 year / As per plan submitted by Gas Agencies.	RTO & Gas Companies
u)	<ul style="list-style-type: none"> <li>• <b>Development of Green Belt:</b> Develop Green belt from 20% to 33% of the total area.</li> </ul>	Ongoing	Forest Department
v)	<ul style="list-style-type: none"> <li>• <b>Land Pollution Soil Testing:</b> Soil testing of some large scale industry has been done and is being carried out every month. Soil testing in all 3 industrial clusters of Noida is proposed to be done for different metals like Pb, Cr, Cu, Fe etc. twice a year through recognize laboratory.</li> </ul>	01 Year	UPPCB
w)	<ul style="list-style-type: none"> <li>• <b>Study of impact on Human Health of Water &amp; Air Pollutants</b></li> </ul>		IITR (Earlier ITRC) / Health Department
x)	<ul style="list-style-type: none"> <li>• <b>Municipal solid waste Disposal:</b> At present Municipal solid waste is disposed as landfill in low lying areas. Authority should develop proper MSW facility as per MSW Rules at Proper site. Quantification of MSW Site selection for MSW disposal Strategy for implementation / setting up of integrated facility for MSW to be decided in consultation with local civic authority and implementation to be done in time bound manner. Upcoming High Rise Buildings, Commercial Project, Educational Institution, Multi Plexes, Town ship &amp; Building Projects are major source of Municipal Solid Waste Such projects must ensure setting up of in house MSW disposal facilities as per MSW Rules &amp; ensure compliance of the conditions of the Environment Clearance and NOC from PCB</li> </ul>	Every 3 months	Project proponent to give compliance report to UPPCB.
y)	<ul style="list-style-type: none"> <li>• <b>Committee Update:</b> As per directions from Ministry of Environment and Forest, Government of India short listing of Senior citizen candidate and a representative of a NGO to be included in the State Level Monitoring Committee.</li> </ul>	1 Year	UPPCB and DEC